

# 2017 Continuing Professional Development Program



**RELY  
ON US**  
for education

*2<sup>nd</sup>  
edition  
2017*

 HENRY SCHEIN® | HALAS

# Contents...

## GENERAL DENTAL

Page 4	Swiss Dental Academy: Modern Prophylaxis Techniques for Your Practice
Page 5	Swiss Dental Academy: Modern Concepts in Periodontal Therapy
Page 6	An Evening with Philips Sonicare Discussing the Latest in Preventative Dentistry
Page 7	Implant Maintenance Techniques
Page 8	Pain and Anxiety Control in the Dental Office: Module 1
Page 9	Pain and Anxiety Control in the Dental Office: Module 2
Page 10	Giving you the Edge Sharpening Techniques
Page 11	Dental Open Day
Page 12	Contemporary Approach to Maximising Efficiency in Periodontal Assessment Diagnosis

## DIGITAL DENTISTRY

Page 13	Sleep-Related Breathing Disorders & Craniofacial Pain Mini-Residency Gold Coast 2017
Page 14	4th Australasian Dental Cone Beam Symposium Navigate your Future: 3D Driven Success

## ORTHODONTICS

Page 15	Orthodontic Courses in 2017
Page 16	Evening to Learn!

## ENDODONTICS

Page 17	Reaching The New Standards of Modern Endodontics
Page 18	Modern Endodontics: How to Achieve Endodontic Excellence
Page 19	Practical Intensive of Instrumentation and Obturation
Page 20	Advanced Endodontic Workshop
Page 21	Endodontic Symposium

## SURGICAL

Page 22	Surgical Study Clubs
Page 23	MasterPrep
Page 24	The Latest Advances in Diode Laser
Page 25	Atraumatic Exos & Socket Regeneration: Didactic and Hands-On Course Using Pig Jaws
Page 26	Advanced Bone Grafting Blocks & Sinuses
Page 27	Immediate Loading with TeethXpress with Interactive Surgical & Restorative Discussion

## BUSINESS SOLUTIONS

Page 28	Retaining Patients to Achieve a Fully Booked™ Dental Practice
Page 29	Setting Up for Success
Page 30	Communication for Success – Motivational Interviewing in Action

## TERMS AND CONDITIONS

### CANCELLATION/REFUND POLICY

All cancellations must be received in writing via email ([events@henryschein.com.au](mailto:events@henryschein.com.au)). Delegates will receive 75% of their registration back if they cancel 2-4 weeks prior to the course. If the delegate cancels 1-2 weeks prior to the course, they receive 50% of their registration fee.

Please note that you will not be refunded the registration fee if you cancel 1 week prior to the course or if you fail to attend.

### CPD CERTIFICATES

Certificates will be handed out to the registered attendee at the conclusion of the course.

### FOOD ALLERGIES/DIETARY REQUIREMENTS

If you have any specific food allergies or dietary requirements, please be sure to mention this when you register online.

### REGISTRATION ENQUIRIES

If you have any questions regarding a course or need assistance while registering, please contact us accordingly.

Telephone: 1300 302 421

Email: [events@henryschein.com.au](mailto:events@henryschein.com.au)

Please note that we do not accept registrations via email or fax.

### PAYMENT FOR COURSES

Your registration fee must be paid in full when you register.

We accept payments by credit card or private cheque only.

# SCHEIN TV

 HENRY SCHEIN® | HALAS



## 2017 EPISODES COMING SOON!

### A FIRST FOR DENTAL CPD IN AUSTRALIA

The webcast allows you to **watch the lecture LIVE**  
**and interact** with the presenters **LIVE!**

If you have missed out on any of the first six Episodes of Schein TV,  
visit the **Archived Episodes** section on [www.henryschein.com.au/tv](http://www.henryschein.com.au/tv) to view them today\*.

Make sure that you're on our list to hear when the next Episode will be available!  
Email your interest to [events@henryschein.com.au](mailto:events@henryschein.com.au)

#### *Episode 1*

**Maximising Outcomes  
with GIC's – Which Glass  
Ionomer to use where?**

Presented by  
Professor Ian Meyers



#### *Episode 4*

**Especially for General Dentists:  
A New Technique for Restorative  
and Aesthetic Dentistry**

Presented by  
Professor Claudio Novell



#### *Episode 2*

**Revolution Advances in  
Local Anaesthesia Delivery**

Presented by  
Dr Eugene R Casagrande



#### *Episode 5*

**Managing Daily Dental Dilemmas:  
Practical Procedures to  
Rejuvenate and Restore At-Risk  
Dentitions**

Presented by  
Professor Ian Meyers



#### *Episode 3*

**Demystifying the  
DIAGNOcam**

Presented by  
Professor Laurie Walsh



#### *Episode 6*

**Clinical Case Discussion using  
Hybrid Ceramics: Materials,  
Properties and Indications**

Presented by Tom Behaeghel



\*Note, you are no longer able to obtain 1 CPD Hour for an Archived Episode





# Swiss Dental Academy: Modern Prophylaxis Techniques for Your Practice

Presented by Associate Professor Axel Spahr

## 3.5 to 6 CPD HOURS

### NEW SOUTH WALES

Saturday, 17 June 2017  
Saturday, 26 August 2017  
Saturday, 21 October 2017  
Saturday, 9 December 2017

Sydney Dental Hospital  
Hand-on with Patients  
2 Chalmers Street  
Surry Hills, NSW 2010

Lecture only: 9AM-12:30PM  
Full day: 9AM-4PM

COST:  
Lecture only: \$160  
Full day: \$650

#### Lecture

The main focus of the lecture is discussing how to identify the most modern, gentle and cost effective techniques available for periodontal and implant maintenance.

Key topics include how to make periodontal treatments more effective and more enjoyable to you, your patients and your dental practice.

#### Periodontal Disease

- Understanding biofilm
- Role of professional biofilm management
- Insights on ultrasonic and air-polishing technologies for biofilm removal

#### Implant Disease

- Applying the above principles to implants
- How to best care for implants
- Prevention and treatment of peri-implant mucositis

#### Hands-On Workshop

This workshop is a platform for clinical experience learning and sharing. The correct techniques with both ultrasonic and air polishing devices will be demonstrated and trained first on simulation models and then clinically on patients. Dental professionals will learn to maximize efficiency and patient comfort.

Learn how to

- Correctly apply ultrasonic instrumentation
- Correctly utilise supra-gingival air polishing devices
- Correctly utilise sub-gingival air polishing devices
- Correctly utilise deep pocket sub-gingival air polishing devices
- Learn which, when and where to utilise the different prophylaxis powders

#### **SYDNEY DENTAL HOSPITAL:** Specific Conditions upon registration

- Be willing to undergo a National Criminal Record Check
- Provide 100 Points of Identification to do so
- Provide evidence of protection against specified infectious diseases
- Must be registered with Dental Board of Australia
- Must be covered by professional indemnity insurance including civil liability cover for all aspects of practice

# Swiss Dental Academy: Modern Concepts in Periodontal Therapy

Presented by Dr Sal Shahidi and Dr Jeremy Vo

## 4.5 CPD HOURS

This workshop is aimed at dentists and hygienists to discuss recent advances in periodontal therapy which have influenced our management of Periodontitis and Peri-implant diseases. Clinical tips and protocols will be discussed which can improve healing and patient outcomes.

### Topics

#### Diagnosis of Periodontal diseases

- Clinical treatment protocols – non-surgical and surgical
- Antiseptics – which one to use?
- Antibiotics – when to prescribe?
- Modern advances with insights on ultrasonic and air-polishing technologies for biofilm removal

#### Implant diseases

- Applying the above principles to implants
- How to best care for implants for your patients
- Prevention and treatment of peri-implant diseases

#### Hands-on workshop

There will also be a workshop which will give participants an opportunity to trial ultrasonic and airpolishing devices on simulation models.

- Clinical indications for the safe and efficient removal of biofilm using air-abrasion, both for supra- and subgingival uses.
- How to increase patient comfort and clinical efficiency using the new air-abrasion powders



### QUEENSLAND

**Saturday, 29 July 2017**

Henry Schein Halas  
Ground Floor,  
8 Gardner Close  
Milton, QLD 4064

### SOUTH AUSTRALIA

**Saturday, 5 August 2017**

Henry Schein Halas  
311 Unley Road  
Malvern, SA 5061

9AM - 2:30PM

COST: \$550

**ONLINE REGISTRATION** [www.henryschein.com.au/education](http://www.henryschein.com.au/education)

**Registration enquiries:** 1300 302 421 OR EMAIL [events@henryschein.com.au](mailto:events@henryschein.com.au)

**EMS**   
SWISS DENTAL ACADEMY 



# An Evening with Philips Sonicare Discussing the Latest in Preventative Dentistry

Presented by Dr Jeffrey Kho

## 1 CPD HOUR

Dr Jeffrey Kho will present the latest innovation from Philips Sonicare and how consumer oral care products play an important role in the overall delivery of preventative dentistry.

### QUEENSLAND

Tuesday, 20 June 2017

Henry Schein Halas  
Ground Floor,  
8 Gardner Close,  
Milton, QLD 4064

6PM to 8.30PM

(Drinks and canapés  
provided)

COST: \$60

#### Discussion Topics:

- How do we keep our patients motivated
- Traditional methods vs electric brushing
- Oral health and systemic links
- Technique and technology – the two pillars of successful patient empowerment
- Difference in power tooth brush technologies



**PHILIPS**  
sonicare

**ONLINE REGISTRATION** [www.henryschein.com.au/education](http://www.henryschein.com.au/education)

Registration enquiries: 1300 302 421 OR EMAIL [events@henryschein.com.au](mailto:events@henryschein.com.au)

# Implant Maintenance Techniques

Presented by Dr Tihana Divnic-Resnik

## 2.5 CPD HOURS

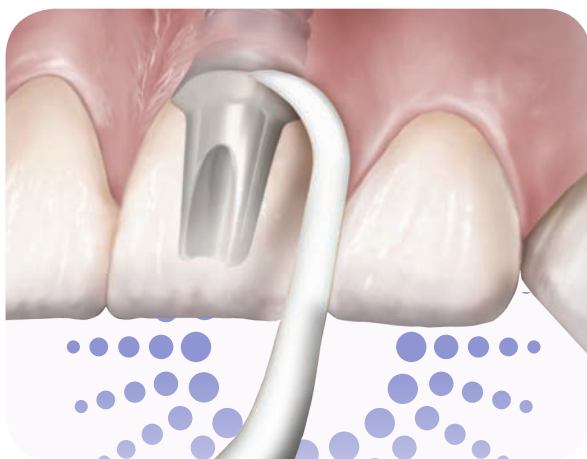
This course is designed to provide fundamentals in the understanding of the bone and soft tissue to implant and abutment surface interface and dynamics of their changes after implants have been exposed to the oral cavity and restored. Once placed, dental implants need maintenance to ensure implant functionality and prevention of biological complications. Most common biological implant complications peri-mucositis and peri-implantitis can be avoided by thorough assessment and recording of implant tissues and by well-developed maintenance program. This course will discuss main signs of symptoms of peri-implant diseases and most common risk factors involved in their development and progression and basic strategies for their diagnosis and prevention.

### COURSE TOPICS:

- Biological concept of healthy peri-implant tissues
- Peri-implant mucositis and peri-implantitis
- Diagnosis of peri-implant diseases
- Fundamentals of the implant maintenance program

### LEARNING OUTCOMES

At the completion of this didactic course participants will be able to understand and describe differences between periodontal and peri-implant tissues; they will be able to explain the rationale for probing of dental implants; they will also be familiar with signs and symptoms of peri-implant diseases and understand strategies for their prevention.



## NEW SOUTH WALES

Monday, 14 August 2017

ADIA National Office  
Unit 10 - 85 Bourke Road  
Alexandria, NSW 2015

6PM - 9PM

COST: \$60

**ONLINE REGISTRATION** [www.henryschein.com.au/education](http://www.henryschein.com.au/education)

**Registration enquiries:** 1300 302 421 OR EMAIL [events@henryschein.com.au](mailto:events@henryschein.com.au)



How the best perform



# Pain and Anxiety Control in the Dental Office: Module 1

Presented by Dr Steven Parker

## 6 CPD HOURS

This course will cover a spectrum of anxiety relieving alternatives. It will allow the course participant to become confident in the use of a selection of anxiolytic techniques that can be offered to their patients including psychosedation, oral sedation and nitrous oxide sedation.

All participants will have the opportunity to administer and experience the full range of effects of relative analgesia using nitrous oxide- oxygen, and, after completing the course, will feel confident in setting up and administering this agent.

### Learning Objectives:

- Gain an understanding of the key causes of fear and anxiety in our patients
- Understand basic psychosedation techniques and be able to apply them
- Revise Basic Life Support
- Understand the pharmacodynamics and pharmacokinetics, advantages/disadvantages, indications/contra-indications of oral sedation and feel confident utilising it in your practice
- Understand the pharmacodynamics and pharmacokinetics, advantages/disadvantages, indications/contra-indications of nitrous oxide sedation and feel confident utilising it in your practice

### NOTE

*During the practical sessions, it is essential that all participants wishing to perform any procedure on a colleague are registered dental professionals in Australia.*

## QUEENSLAND

**Friday, 14 July 2017**

Henry Schein Halas  
Ground Floor,  
8 Gardner Close  
Milton, QLD 4064

## VICTORIA

**Friday, 20 October 2017**

Henry Schein Halas  
Level 9 - 369 Royal Parade  
Parkville VIC 3052

9:00AM to 4:30PM

### COST:

Module 1 only: \$1045

Both Module 1&2:  
\$935 per module.

**ONLINE REGISTRATION** [www.henryschein.com.au/education](http://www.henryschein.com.au/education)

**Registration enquiries:** 1300 302 421 OR EMAIL [events@henryschein.com.au](mailto:events@henryschein.com.au)



# Pain and Anxiety Control in the Dental Office: Module 2

Presented by Dr Steven Parker

## 6 CPD HOURS

Module Two builds on and complements the pain and anxiety control techniques taught in Module One (psychosedation, oral sedation and Nitrous Oxide). It provides further alternatives to allow the clinician to alleviate a patient's anxiety and pain.

This module, in conjunction with Module One, provides a comprehensive review and practical experience in the techniques that are available to relieve pain and anxiety in the dental office.

### Learning Objectives:

Understand the utilisation of analgesics in a Dental Office in terms of how they work and prescribing appropriately – Paracetamol, NSAIDs and opioids.

Administer local anaesthetics successfully and in a safe manner with minimal risk to patient and operator utilising infiltration and regional nerve block techniques. This includes advanced local anaesthesia techniques such as:-

- (Higher) Inferior alveolar nerve block
- Gow-Gates mandibular nerve block
- Incisive (mental) nerve block
- Akinosi-Vazirani mandibular nerve block
- Infra-Orbital nerve block

Gain experience with the Wand, a computerised local anaesthesia administration system, and learn two new injection techniques designed to be given by the Wand.

### NOTE

*During the practical sessions, it is essential that all participants wishing to perform any procedure on a colleague are registered dental professionals in Australia.*



## QUEENSLAND

**Friday, 11 August 2017**

Henry Schein Halas,  
Ground Floor,  
8 Gardner Close  
Milton, QLD 4064

## VICTORIA

**Friday, 27 October 2017**

Henry Schein Halas  
Level 9 - 369 Royal Parade  
Parkville VIC 3052

9:00AM to 4:30PM

### COST:

Module 1 only: \$1045

Both Module 1 & 2:  
\$935 per module.

**ONLINE REGISTRATION** [www.henryschein.com.au/education](http://www.henryschein.com.au/education)

**Registration enquiries:** 1300 302 421 OR EMAIL [events@henryschein.com.au](mailto:events@henryschein.com.au)



# Giving you the Edge Sharpening Techniques

Presented By Robyn Watson and Jane Rossi

## 2.5 CPD HOURS

A relaxed, informal and interactive workshop highlighting the fundamentals behind instrument sharpening practice. The course will discuss the importance and advantages of using sharp periodontal instruments, how to evaluate sharpness and how to re-establish sharp cutting edges whilst reviewing instrument design. This hands-on workshop actively focuses on simplification of 'manual' sharpening techniques, how to use sharpening guides and aids whilst also discussing on the benefits and implementation of automated sharpening devices such as the Hu-Friedy Sidekick.

### COURSE TOPICS:

#### Sharpening Concepts

- Understanding instrument design and differences
- Understanding working-end design
- Appreciating and identifying a dull cutting edge
- Evaluating instrument sharpness

#### Preserving Working-End Design

- Review common sharpening errors
- Instrument replacement and breakage

#### Planning for Instrument Maintenance

- Setting time aside
- When is the best time to sharpen
- Who should sharpen?

#### Preserving Working-End Design

- Sharpening Armamentarium
- Sharpening stones
- Sharpening methods

### LEARNING OUTCOMES

Participants attending this workshop will gain a sense of assurance and confidence in instrument sharpening as a result of a new perspective and attitude. At the completion of this course, participants will be confident in identifying dull instruments and be able to demonstrate safe manual and guided sharpening practices. Participants will also have an understanding of different sharpening stones and their recommended use whilst also gaining an appreciation of the importance of regular routine sharpening maintenance.

## SOUTH AUSTRALIA

**Tuesday, 29 August 2017**

Henry Schein Halas  
311 Unley Road,  
Malvern, SA 5061

## NEW SOUTH WALES

**Tuesday, 5 September 2017**

Henry Schein Halas  
Unit 1, 44 O'Dea Ave,  
Waterloo, NSW 2017

## VICTORIA

**Thursday, 14 September  
2017**

Henry Schein Halas  
Level 9, 369 Royal Parade,  
Parkville, VIC 3052

6PM -9PM

COST: \$60



How the best perform

**ONLINE REGISTRATION** [www.henryschein.com.au/education](http://www.henryschein.com.au/education)

**Registration enquiries:** 1300 302 421 OR EMAIL [events@henryschein.com.au](mailto:events@henryschein.com.au)

# Dental Open Day

## *expressions of interest*

### FREE CPD PROGRAM

We just love meeting our customers! But sometimes distance makes it difficult, so the team at Hu-Friedy want to come to you! Come and spend a few hours getting to know what's new and also view the most comprehensive product display of Hu-Friedy instruments outside of ADX! We are also happy to offer a FREE CPD Program.

Light refreshments will be available throughout the day. Come and meet the Hu-Friedy Specialist Team and spend time getting the most up to date product information in the areas of:

- Restorative / Composite
- Implant Maintenance
- Periodontal Diagnostics
- Orthodontics
- Endodontics
- Surgical & Implant
- Dental Hygiene
- Infection Control

Thinking about a new surgery or sterilizing room fit out? Why not take the opportunity to book a Consultation with one of the Hu-Friedy Team who can help you with workflow planning and instrumentation requirements – special deals available!

### Queensland

**Wednesday, 26 July 2017**  
Townsville

### New South Wales

**Tuesday, 22 August 2017**  
Tamworth

**Wednesday, 23rd August 2017**  
Dubbo

### ACT

**Friday, 25th August 2017**  
Canberra

Times	Talks & Workshops
2.30PM - 3.30PM	Want to implement a cassette system but not sure where to start? Let's walk through the process!
4.00PM - 5.00PM	Manual Instrument Sharpening Basics workshop (limited to 20)
5.30PM - 6.30PM	Instrument Reprocessing Protocols for the modern dental surgery
7.00PM - 8.00PM	Instrument Auditing – What to look for and how to make sure you are getting the best from your instrument investment

**ONLINE REGISTRATION** [www.henryschein.com.au/education](http://www.henryschein.com.au/education)

Registration enquiries: 1300 302 421 OR EMAIL [events@henryschein.com.au](mailto:events@henryschein.com.au)



How the best perform



# Contemporary Approach to Maximising Efficiency in Periodontal Assessment Diagnosis

Presented by Robyn Watson, Jane Rossi, Marcel Johnson and Deb Brown

## 2.5 CPD HOURS

Clinical skills required for providing effective & efficient periodontal therapy can be enhanced and strengthened by viewing all instruments as a total unit rather than as separate entities.

This workshop will cover topics such as how to select the best instruments for diagnosis and periodontal assessment through to treatment planning and risk management. Ergonomics and hand positioning techniques will also be covered to help enhance clinical efficiency and minimise stress injuries to the operator.

### Course topics

The workshop will highlight the following areas:

- Ergonomics - working with positioning to maximise efficiency and reduce musculoskeletal injuries
- Periodontal Diagnosis and Assessment - fully utilising the instruments and tools available for assessing and diagnosing periodontal disease
- Efficient management of instrument armamentarium – How to choose instruments packs/cassettes for patient use
- Using Periodontal Screening and Recording as a treatment planning tool
- Manage Supportive Periodontal Therapy using online Risk management modalities

### LEARNING OUTCOMES

Participants will be able to:

- Position hands and body with minimal ergonomic stress
- Choose an efficient diagnostic and assessment armamentarium
- Design instrument packs for most efficient usage
- Understand how to use PSR as a periodontal assessment and treatment planning tool
- Use online modalities to manage risk and supportive periodontal therapy

### NEW SOUTH WALES

Tuesday, 14 November 2017

ADIA NSW

Unit 10, 85 Bourke Road  
Alexandria, NSW 2010

### SOUTH AUSTRALIA

Tuesday, 14 November 2017

Henry Schein Halas  
311 Unley Road,  
Malvern, SA 5061

### QUEENSLAND

Tuesday, 14 November 2017

Henry Schein Halas,  
8 Gardner Road,  
Milton, QLD 4064

### VICTORIA

Thursday, 16 November 2017

Henry Schein Halas,  
L9, 369 Royal Parade,  
Parkville, VIC 3052

6PM - 9PM

COST: \$60



How the best perform



**ONLINE REGISTRATION** [www.henryschein.com.au/education](http://www.henryschein.com.au/education)

**Registration enquiries:** 1300 302 421 OR EMAIL [events@henryschein.com.au](mailto:events@henryschein.com.au)

# Sleep-Related Breathing Disorders & Craniofacial Pain

## MINI-RESIDENCY GOLD COAST 2017

Directed by International Educator Dr Steven Olmos

### UP TO 48 CPD HOURS

#### PROGRAM INFORMATION

##### Session 1: 12-13 August 2017

Both days: 8AM-5PM

- Screening SBD, OSA, Craniofacial Pain
- How to Find CR
- Imaging: CBCT, MRI
- Motor Nerve Reflex Evaluation
- Electrodiagnosis: JVA, Jaw Tracking, EMG
- Airway & TMJ Neuroanatomy
- Anatomy
- Diagnosis

##### Session 3: 20-21 October 2017

Both days: 8AM-5PM

- Sleep Disorders that cause TMJ Pain
- Typical and Atypical Neuralgias
- Nutrition
- Neuropathic Disorders
- Physical Medicine Modalities
- Musculoskeletal Pain

##### Session 2: 22-23 September 2017

Both days: 8AM-5PM

Sleep Disorders

- Triage of Sleep Appliance Therapy
- Headaches
- Recapturing Discs
- Orthotic Design & Indications
- Pharmacology

Course includes: comprehensive 3 session manuals, all forms and documentation (patient intake, clinical exam, and tracking) are supplied on USB to successfully treat patients.



#### QUEENSLAND

QT Gold Coast 7 Staghorn Ave, Surfers Paradise  
www.qtgoldcoast.com.au

#### Course Fees

3 Sessions

\$7700 per person

Single Session \$2800 per person Practitioners

\$995 per person Auxillary Staff

*Refund Policy Cancellations within 30 days of each session date will incur a 50% cancellation fee*

*Discounted Fees 50% for repeat Practitioners*

#### Why take this course?

##### Patients (Adults & Children) Seek Treatment for the following:

- Headaches
- Facial Pain
- Joint Noises
- Bruxism
- Mouth Breathing
- Obstructive Sleep Apnea
- Snoring
- Periodontal Disease
- Straight Teeth



#### ONLINE REGISTRATION [www.henryschein.com.au/education](http://www.henryschein.com.au/education)

Registration enquiries: 1300 302 421 OR EMAIL [events@henryschein.com.au](mailto:events@henryschein.com.au)

For further course information contact Trudy Nielson

Ph. 07 5562 0355 or email [trudy@bodylogicaustralia.com.au](mailto:trudy@bodylogicaustralia.com.au)





# 4th Australasian Dental Cone Beam Symposium Navigate your Future: 3D Driven Success

Presented by Dr. Raahib Dudhia, Dr. Christopher Ho, Dr. David Cable & Dr. Darryl Moses

## 14 CPD HOURS

Cone Beam Dental Imaging is a rapidly expanding technology in Australia & New Zealand. Globally, this technology is revolutionising the way we image dental patients. It is radically transforming the way dental professionals gather information, diagnose and plan treatments. However, CBCT provides images that are different and far more detailed than conventional panoramic or intra oral images. The 4th Australasian Cone Beam Symposium provides a tremendous opportunity to establish, develop and expand your understanding of three dimensional CBCT data.

- Introduction to Radiographic Diagnosis of dental and non-dental pathology.
- CBCT Review and Interpretation.
- Understand the principles of operation of

CBCT units with respect to selection criteria and minimising patient dose.

- Develop imaging protocols to optimise task specific applications and appreciate how this can increase the diagnostic yield and clinical efficacy of CBCT imaging.
- An excellent opportunity on how to optimise your treatments using 3D imaging.
- Learn how transitioning to 3D can benefit your patients and practice.
- Get perspectives from knowledgeable industry experts on real 3D imaging applications in dentistry.
- Software workshops designed to help with diagnosis and treatment planning.

## AGENDA

### Friday, 25th August 2017

CBCT Protocol Selection - optimising images according to diagnostic requirements - Dr Raahib Dudhia

Applied 3D imaging - tools to improve your endodontics - Dr David Cable

The use of CBCT in the evaluation of airway and sleep disordered breathing - Dr Darryl Moses

CBCT Review and Interpretation - A systematic approach to CBCT review - Dr Raahib Dudhia

**Cone Beam Cocktail Party** -Held at The Conservatory Lounge and Bar - 6.30pm - 9.30pm - attendance optional

### Saturday, 26th August 2017

The Digital Workflow in Implantology – are we there yet? - Dr Christopher Ho

Pathology Review - Radiographic diagnosis of dental and non-dental pathology - Dr Raahib Dudhia

### **3D Software User Group Workshop\* - 1PM TO 5.30PM**

Join us for a hands on 3D User Group Workshop where you will learn from Factory Applications Specialists about the latest software features, be shown advanced tools and look at useful ways to help make your treatment planning easier and save you time. Along with clinical case discussions and reviews. If you own an iCAT, Instrumentarium, Kavo, Planmeca or Morita CBCT machine and would like to attend the complimentary 3D User Group Workshop, please select the appropriate workshop when you register online.

1. iCAT/Instrumentarium/Kavo - Invivo/TxStudio workshop
2. Planmeca - Romexis workshop
3. Morita - iDixel workshop

*\*User Group Workshops are restricted to owners of the above machines. Please bring your laptop with the software installed to participate in the workshop.*

## NEW SOUTH WALES

### **Friday, 25th August 2017**

8.30AM to 5.30PM

### **Saturday, 26th August 2017**

8.30AM to 5.30PM

## COST:

Both days: \$1,390

Auxiliary Staff: \$550

User group workshop:

Complimentary

**ONLINE REGISTRATION** [www.henryschein.com.au/education](http://www.henryschein.com.au/education)

Registration enquiries: 1300 302 421 OR EMAIL [events@henryschein.com.au](mailto:events@henryschein.com.au)

# Orthodontic Courses in 2017

ADA NSW Centre for Professional Development in conjunction with Henry Schein Halas are delighted to welcome Dr Lowenhaupt back to Australia for these upcoming Orthodontic courses in 2017.

Presented by Eric B. Lowenhaupt

## 13 CPD HOURS

### ADVANCED ORTHODONTICS SERIES - SESSION 11 13 CPD HOURS

DATE:	TIME:	COSTS: (inc GST):
Saturday, 11 November 2017	8:30AM - 5:00PM	ADA Member \$1980 Non Member \$2376

This program is a follow up from session 10 addressing the techniques on finishing and detailing cases, and Dr Lowenhaupt's tips and tricks that he has acquired over 30+ years of Orthodontics. Multiple cases will be utilised to demonstrate various aspects of mechanics, finishing and detailing and various treatment modalities. As always interest will be paid to the best available 'evidenced based information'. Additionally, multiple treatment 'pearls' will be shown to make your practice easier and more efficient.

### SIMPLIFIED COMMON SENSE ORTHODONTIC BIOMECHANICS 13 CPD HOURS

DATE:	TIME:	COSTS (inc GST):
Friday, 14 July 2017 - Saturday, 15 July 2017	8:30AM - 5:00PM	ADA Member \$1980 Non Member \$2376

In today's clinical environment the success of orthodontic treatment is not only measured by the goals of obtaining an aesthetics, functional and stable result but these goals must also be achieved in an effective and efficient way. The debates over bracket designs, wire types, arch form, ligation techniques, aligner therapy as well as many procedures touted to increase the speed of tooth movement rages throughout the literature. Through all of this the basic requirements for orthodontic tooth movement have not changed over the years. With the understanding and mastering of 'simplified common sense orthodontic biomechanics' orthodontic treatment can be provided in a qualitative manner with efficiency. Our goal is to set-up simplified force systems to address any type of tooth movement necessary, because in orthodontics 'tooth movement' has always been the name of the game.



### NEW SOUTH WALES

For information and to register contact

ADA NSW Centre  
for Professional Development

By phone  
1800 737 346

By email  
admin@adacpd.com.au

Online  
www.adacpd.com.au



# Evening to Learn!

Presented by Eric B. Lowenhaupt

## 2 CPD HOURS

Restorative Dentists are often tasked with the replacement of missing posterior teeth, either with a fixed bridge, or more commonly today, with an implant and crown. Often in these cases where posterior teeth have been missing for some time, other teeth begin to shift making a restoration of any type challenging or impossible. In these instances where teeth are tipped into the edentulous space, a simple procedure for uprighting a molar may be accomplished which re-establishes lost space or makes space for the placement of an implant.

This evening's meeting will demonstrate a method to upright teeth with the use of some simple fixed, partial orthodontic appliances. The clinician will learn how and where to place the brackets, what type of wires to use and how to actually place and bend the wires. We will also be demonstrating several different scenarios for application and adjustments of the fixed appliances system as well as retention during implant integration. This program is designed for those participants who have limited experience with orthodontics as well as the more experienced clinician. All course materials supplied.

### Course Objectives:

- Molar uprighting techniques
- Demonstration of positioning and placement of partial fixed appliances
- Demonstration of wire types and wire bending
- Hands on demonstration and participation by attendees

### Limited to 25 Participants

## QUEENSLAND

**Wednesday, 8 November 2017**

Henry Schein Halas,  
Ground Floor,  
8 Gardner Close  
Milton, QLD 4064

6PM – 8.30PM

COST: \$295



**ONLINE REGISTRATION** [www.henryschein.com.au/education](http://www.henryschein.com.au/education)

Registration enquiries: 1300 302 421 OR EMAIL [events@henryschein.com.au](mailto:events@henryschein.com.au)

# Reaching The New Standards of Modern Endodontics

Presented by Dr Oliver Pope

## 7 CPD HOURS

### AN EVIDENCE-BASED THEORETICAL AND CLINICAL PROGRAM

Do you want to use the most modern techniques and materials?  
Do you want to treat teeth that last longer?

This course is designed to give the skilled general practitioner the knowledge, materials and techniques to complete endodontic treatment to the highest possible standard.

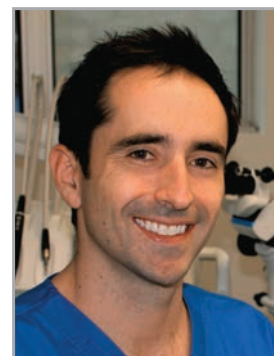
This program will be limited to a small group to ensure open communication throughout the course and a personalised experience for participants.

#### COURSE TOPICS:

- Identifying the right tooth. Complex diagnostic scenarios: cracked teeth and myofascial pain.
- An introduction to the new concept of "Minimally Invasive Endodontics" and an evidence-based evaluation of the risks and benefits of MIE. Techniques to employ in practice to extend the life of endodontically treated teeth.
- An Australian first: exposure to the latest advances in NiTi technology - beyond heat-treated NiTi. A look at the advances in nickel titanium instrumentation with a focus on the latest advance in NiTi technology – beyond heat treated NiTi.
- Learn to customise canal preparation specific to canal morphologies – one size and technique does not fit all – take your knowledge to the next level. Do you fracture instruments? Negotiate complex anatomy the way endodontists can: ledges, aggressive curvatures, S-bends whilst minimising the risks of fractures. Practical session with EDM NiTi files.
- A look at the major tooth-threatening iatrogenic errors: fractured instruments and perforations and preventing such mistakes. A focus on communication with the patient when complications occur. Understanding when those complications will be disastrous to outcome and when they will not.
- Advances in obturation techniques and new sealer technology. Practical session.
- What is the "new" ideal standard of care and what can general dental practitioners do to achieve it?
- Restoration of root-filled teeth. Are crowns always necessary? A look at recent literature about the use of posts in rootfilled teeth and to assist in selecting the appropriate type of post.
- A microscope will be available for participants to use during the session.
- Participants are asked to bring extracted teeth with access cavities prepared and loupes.

#### LEARNING OBJECTIVES:

- Understanding the limitations and advantages minimally invasive endodontics and implementing "orifice directed access" in your practice
- Utilise the latest NiTi technology to achieve specific canal-appropriate instrumentation with reduced risk of iatrogenic errors
- Ability to obturate with modern techniques and sealers
- Advanced knowledge of conservative restoration of root-filled teeth



### VICTORIA

Friday, 8th September 2017

The Dental Solutions Australia

Level 1- 233 Collins Street  
Melbourne, VIC 3000

9AM – 5PM

COST: \$650

**ONLINE REGISTRATION** [www.henryschein.com.au/education](http://www.henryschein.com.au/education)

**Registration enquiries:** 1300 302 421 OR EMAIL [events@henryschein.com.au](mailto:events@henryschein.com.au)



# Modern Endodontics: How to Achieve Endodontic Excellence

Presented by Dr Jeff Ward & Dr Kurien Mamootil

## 6 CPD HOURS

Update your skills in endodontics and learn how incorporating NiTi rotary instruments, obturation units and apex locators will improve your efficiency and outcome. This course can benefit your practice in understanding how rotary NiTi instruments, apex locators, CBCT imaging and modern obturation techniques will increase endodontic predictability. The hands on component to the course offers the participant the ability to practice using NiTi instruments and endodontic equipment on plastic blocks and extracted teeth. The small group is conducive to sharing and discussing your challenging cases with two Endodontists who have extensive clinical and educational experience.

### VICTORIA

Friday, 2 June 2017

Henry Schein Halas  
Level 9, 369 Royal Parade  
Parkville, VIC 3052

### QUEENSLAND

Friday, 28 July 2017

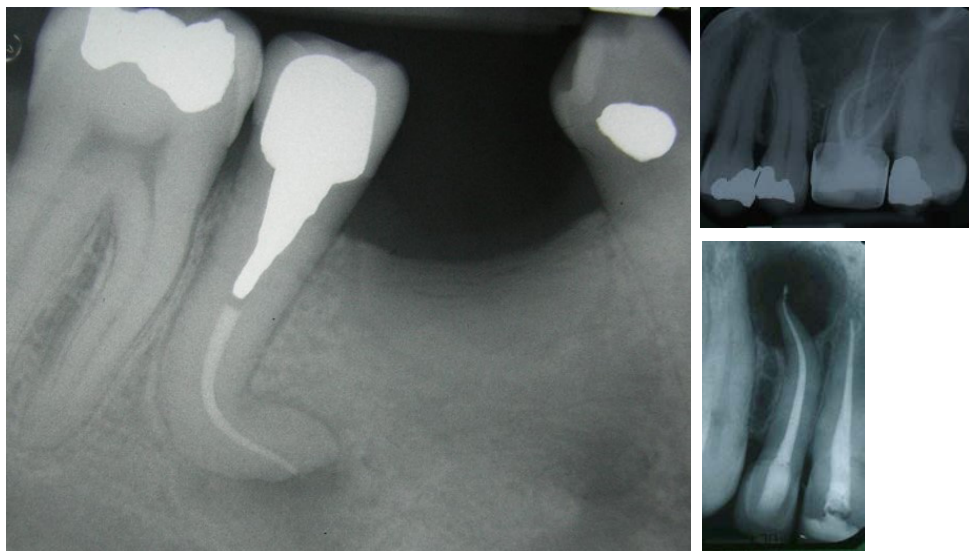
Henry Schein Halas  
Ground Floor, 8 Gardner Close  
Milton, QLD 4064

9AM - 5PM

COST: \$650

### LEARNING OBJECTIVES:

- Learn about the important factors that determine endodontic success
- Introduce a safe and efficient, biological based sequence for using NiTi files
- Learn about what's new in endodontics including ConeBeam CT's
- Learn about the importance of irrigation and how to improve its efficacy
- Learn about apex location, clinical significance and benefits
- Learn about simple and efficient obturation techniques to match your NiTi preparations
- An update on diagnosis and treatment planning in endodontics using case illustrations



**100+** Years  
A Century of Innovation

**ONLINE REGISTRATION** [www.henryschein.com.au/education](http://www.henryschein.com.au/education)

Registration enquiries: 1300 302 421 OR EMAIL [events@henryschein.com.au](mailto:events@henryschein.com.au)



# Practical Intensive of Instrumentation and Obturation

Presented by Dr Oliver Pope

## 3.5 CPD HOURS

### A short evidence-based theoretical and practical program

This course is designed to give the general practitioner the knowledge, materials and techniques to complete endodontic treatment to the highest possible standard. The short course will focus on conservative instrumentation techniques utilising Hyflex CM and EDM files in addition to warm vertical compaction techniques.

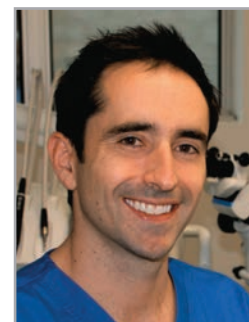
### Course Topics

An introduction to the new concept of "Minimally Invasive Endodontics" and an evidence-based evaluation of the risks and benefits of MIE. This course takes a look at the latest advances in NiTi technology - beyond heat-treated NiTi and focuses on the best ways to use these new instruments. Learn to customise canal preparation specific to canal morphologies – one size and technique does not fit all and take your knowledge to the next level. Do you fracture instruments? Learn how to negotiate ledges, aggressive curvatures, S-bends whilst minimising the risks of fractures. This course also includes a practical session with EDM NiTi files and a session of warm vertical compaction and obturating large canals.

Participants are asked to bring extracted teeth with access cavities prepared. This program will be limited to a small group to ensure open communication during the course and better value for participants.

### Learning Objectives

- Understanding the limitations and advantages minimally invasive endodontics and implementing "orifice directed access" in your practice
- Utilise the latest NiTi technology to achieve specific canal-appropriate instrumentation with reduced risk of iatrogenic errors
- Ability to obturate with modern techniques and sealers



### VICTORIA

**Saturday, 29 July 2017**

Henry Schein Halas  
Level 9, 369 Royal Parade  
Parkville, VIC 3052

8:30AM - 1PM

COST: Purchase 5 Coltene Hyflex File Packs and receive this course for FREE!

**Contact your local Coltene Specialist Representative to hear more about this special offer and receive the course discount code**

**Contact your local Coltene Specialist Representative to hear more about this special offer and receive the course discount code**

Shen Carter: shen.carter@henryschein.com.au

0449 902 618



# Advanced Endodontic Workshop

Presented by Dr Shalin Desai

## 7 CPD HOURS

### QUEENSLAND

**Friday, 2 June 2017**  
Henry Schein Halas  
Ground Floor  
8 Gardner Close  
Milton, QLD 4064

### NEW SOUTH WALES

**Friday, 21 July 2017**  
Henry Schein Halas  
Unit 1, 44 O'Dea Avenue  
Waterloo, NSW 2017

9AM – 5PM

COST: Purchase 5 Coltene  
Hyflex File Packs and  
receive this course for  
FREE!

**Contact your local  
Coltene Specialist  
Representative to hear  
more about this special  
offer and receive the  
course discount code**

## Hands-on Workshop for Simple to Moderate Challenging Endodontic Cases

Eyes cannot see what mind does not know, endodontics is about attention to fine details.

This program will be limited to a small group to ensure open communication throughout the course and a personalised experience for participants.

### COURSE TOPICS:

Endodontic management of tooth is an integral part of routine general dentistry. Primarily a microorganism caused pulpal and periapical disease could be a challenging task for diagnosis and treatment planning. Each tooth has a unique anatomy of root canal system with various numbers, curvatures as well as apical exits of canals, leading to a new set of challenges every time the endodontic treatment is attempted. Dr Desai will be discussing and sharing useful tips and tricks for day-to-day endodontic assessment, diagnosis and treatment procedures. The aim of the workshop is to simplify simple to moderate case scenarios as well as identify and minimize potential complications.

The day course is primarily hands-on workshop for access preparation, locating and shaping of the root canal system as well as using current techniques and tools for root fillings. The participants would gain ample practice on extracted teeth with a view to gradual and smooth transition into their clinical practice.

The workshop involves step-by-step demonstration of modern treatment procedures along with hands-on workshop on extracted teeth.

### LEARNING OBJECTIVES:

- Diagnosis and case selection in Endodontics, including understanding of the use of advanced investigative tools like CBCT
- Locating root canals – including difficult to locate orifices (MB2, second distal or lingual canal) – basic science, clinical applications and hands-on workshop
- Identifying and avoiding potential complications during root canal shaping
- Various uses of ultrasonic endodontic tools
- Use of Hyflex™ EDM / Hyflex™ CM state of the art file system for shaping of the root canal system – EDM NiTi Files
- Use of modern vertical compaction technique for root canal filling

*Participants are asked to bring loupes and extracted teeth with access cavities prepared.*

**Contact your local Coltene Specialist Representative to  
hear more about this special offer and receive the course  
discount code**

Shirley Curbishley (NSW): shirley.curbishley@henryschein.com.au 0419 264 590  
Peter Zeibots (QLD): peter.zeibots@henryschein.com.au 0417 824 340



# Endodontic Symposium

## Friday 13 October 2017

Join us at the University of Sydney's 2017 Endodontic Symposium with some of Australia's most trusted and respected specialists in Endodontics and Prosthodontics

The 2017 Endodontic Symposium will bring together some of Australia's most trusted and respected specialists in Endodontics and Prosthodontics to discuss the latest trends, procedures and developments in the evolving world of Endodontics. This one-day program is both practical and topical – with the core aim of providing the general practitioner with everyday solutions and treatment options. The day will include 6 presentations where the latest trends, procedures and developments in Endodontics are discussed. There will be multiple sessions where clinical techniques will be demonstrated, with hints and tips provided that you can immediately incorporate into your practice to provide better Endodontic treatment.

If you would like to attend a single day course where Endodontics is comprehensively covered by experts in their fields, don't miss this program!

Book early to receive complimentary parking

### Presentations include:

- Endodontic Diagnosis & Treatment in 3D
- The What, How, Why and When of Apex Locators as it Relates to Endodontic Success!
- Efficient, Effective and Predictable Canal Preparation
- Obturation: filling the space, why and how?
- Before and After the Restoration: An Endodontist's Wish List
- Do posts weaken or strengthen teeth

### Our presenters

**Dr Steven A Cohn** – BA, DDS, Cert Endo, DABE, FICD, FADI, FPFA (Conference Convenor)

**Dr David Figdor** – BDS, LDS, MDSc, FRACDS, Dip Endo, FPFA, PhD, FASM, FADI, FICD

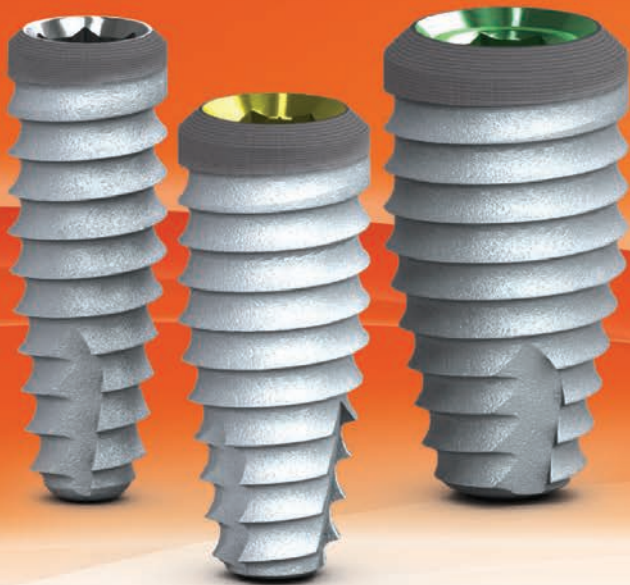
**Dr Matt Filei** – BDS, MDSc, FRACDS, GCClinDent, MRACDS(Endo)

**Dr Kurien Mamootil** – BDS, (Melb), GradDipClinDent (Melb), DCLinDent, FRACDS

**Dr Erika Vinczer** – BDS, BScDent (Hons), MDSc (Endo), FICD

**Dr Terry Walton** – AM, BDS (Syd), MDSc, (Syd) MS (Mich), FRACDS, FICD





## SURGICAL STUDY CLUBS

BioHorizons/Henry Schein Halas Study Clubs is an education forum open to all dentists to support open learning. They cover topics relevant to implant and surgical fields. The evenings encourage open discussion and consist of presentations and case studies from specialists, experienced general dentists and industry professionals covering new technologies, techniques and relevant topics.

No registration fee required.



For more information please visit Henry Schein Halas Events page on [www.henryschein.com.au/education](http://www.henryschein.com.au/education)

Or visit our BioHorizon Facebook page on <https://www.facebook.com/BioHorizonsANZ>



# MasterPrep

Presented by Associate Professor Max Guazzato & Dr Linda Quach

## 15 CPD HOURS

MasterPrep is a two-day course focusing on practical skill development for tooth preparations fixed prosthodontics. This unique course will give the participant an opportunity to practice and learn clinically relevant points of tooth preparation. MasterPrep caters for the use of a variety of dental products such as burs, handpieces, ultrasonics and dental materials in a non-biased environment. Emphasis will be placed on tools and techniques to prepare a tooth and effectively apply this to practice. Clinical examples & hands-on activities will be used to explain the techniques so that the skills can be applied as soon as you return to the clinic.

Be also prepared for some fun. The course is informal and interactive. You will be able to challenge yourself and the other participants with games, prizes and friendly competition. Who will walk away with the trophy and title of 'Winner of MasterPrep 2017'.

### COURSE TOPICS:

- Case selection and treatment planning
- Masking stained teeth for a good aesthetic outcome
- Understanding tooth properties and reasons for failures
- Shade & ceramic selection
- Tooth preparation protocols & workflow (conventional & digital)
- Wax-up, mock up and silicone indexes
- Preparation design- path of insertion, undercuts, resistance & retention form, taper and stresses, grooves & boxes, margin designs- vertical & horizontal, marginal seal & occlusal seat, reasons for failures, margin elevation
- Techniques for margin preparation and accuracy
- Use of magnification & mirrors
- Run down of armamentarium- diagnostics, controlling moisture, illumination, handpieces, burs, ultrasonic tips
- Soft tissue management & do you still need retraction cords?
- Impression taking techniques & workflow (decision tree & organising your team), troubleshooting,
- Full gold crowns, porcelain fused to metal crowns & bridges, all-ceramic crowns, veneers, zirconia, inlays & onlays
- Bonding or cementing- bonding protocols what you can't avoid

### DAY ONE - Lectures:

- Introduction to materials and armamentarium
- Techniques and clinical case examples
- Veneer preparations
- All-Ceramic Crown preparations
- Onlay preparations
- Ergonomics and impression taking techniques
- Chair-side & laboratory techniques for ceramics inlay & onlays
- Metal ceramic preparation techniques
- Full gold crown preparation techniques
- Materials & techniques for soft tissue retraction

### DAY TWO - Hands-on:

- Veneer preparations
- e.max crown preparations
- Zirconia crown preparations
- Ceramic onlay preparations
- Metal ceramic bridge preparations
- Full gold crown preparations
- Numerous stations of dental materials & techniques to experience



## NEW SOUTH WALES

**Saturday 2 & Sunday 3rd  
December 2017**

ADA- Centre for Professional  
Development  
Level 1 - 1 Atchison St  
St Leonards, NSW 2065  
8.30PM - 5PM

### COST:

Early bird \$2250

Standard \$2500

Register Online: Fill out the  
online form and pay via credit  
card at:  
[www.highlandspd.com.au/enrol](http://www.highlandspd.com.au/enrol)







# The Latest Advances in Diode Laser

Presented by Dr David Cox

## 2.5 CPD HOURS

- Why the time has arrived to own a laser and how to incorporate into your practice
- New applications in diode laser use
- Basic laser physics and laser safety requirements
- Hands on session with the Gemini Diode Soft
- Tissue Laser

### PERTH

**Wednesday, 7th June 2017**

Henry Schein Halas  
2nd Floor, 195 Great Eastern  
Highway, Belmont, WA 6104

### VICTORIA

**Thursday, 8th June 2017**

Henry Schein Halas  
Level 9, 369 Royal Parade,  
Parkville, VIC 3052

### NEW SOUTH WALES

**Wednesday, 14th June 2017**

Henry Schein Halas  
Unit 1, 44 O'Dea Avenue  
Waterloo, NSW 2017

6PM - 9PM

COST: \$80



**ONLINE REGISTRATION** [www.henryschein.com.au/education](http://www.henryschein.com.au/education)

Registration enquiries: 1300 302 421 OR EMAIL [events@henryschein.com.au](mailto:events@henryschein.com.au)

# Atraumatic Exos & Socket Regeneration: Didactic and Hands-on Course using Pig Jaws

Presented by Associate Professor Max Guazzato

## 7.5 CPD HOURS

The extraction of a tooth is unquestionably accompanied with the loss of alveolar bone volume. For some patients the loss of bone volume will compromise the possibility for successful dental implant rehabilitation. In other situations it may mean an alteration of the emergence profile and an aesthetic and functional compromise.

Teeth extractions can be challenging in numerous situations including posterior teeth with divergent roots, teeth adjacent to vital structures, teeth with existing pathology or fractured and retained roots. An atraumatic tooth extraction protocol which is consistent, reproducible and ergonomic and will be discussed to reduce trauma and predictably remove teeth.

Post-extraction socket grafting techniques have been controversial and unpredictable due to the varying techniques and grafting materials available. This course will discuss an immediate socket regeneration technique that has given predictable results in private practice for 10 years.

### Didactic component

- An atraumatic extraction technique and why this technique?
- Use of handpieces, osseosets, piezo surgery and instruments for teeth extraction
- Selection of bone grafting materials - autologous, xenograft, alloplastic & allograft materials
- Membranes & how to handle membranes
- Flap design, suture types and suturing techniques

### Hands-on component:

Using pig's jaws, participants will focus on an atraumatic extraction technique and immediate socket regeneration.

- An atraumatic extraction technique
- Immediate socket grafting
- Suturing, manipulation of collagen membranes & use of tacs



## NEW SOUTH WALES

**Sunday 15 October 2017**

ADA- Centre For Professional Development  
Level 1 - 1 Atchison St  
St Leonards, NSW 2065

## VICTORIA

**Sunday 26 November 2017**

Henry Schein Halas  
Level 9 - 369 Royal Parade  
Parkville, VIC 3052

8AM - 5PM

COST:

Early Bird \$1500

Standard \$1650

Register Online: Fill out the online form and pay via credit card at:  
[www.highlandspd.com.au/enrol](http://www.highlandspd.com.au/enrol)

**ONLINE REGISTRATION** [www.henryschein.com.au/education](http://www.henryschein.com.au/education)

Registration enquiries: 1300 302 421 OR EMAIL [events@henryschein.com.au](mailto:events@henryschein.com.au)





# Advanced Bone Grafting Blocks & Sinuses

Presented by Associate Professor Max Guazzato

## 7.5 CPD HOURS

### NEW SOUTH WALES

**Sunday, 10 September 2017**

ADA- Centre For Professional Development  
Level 1 - 1 Atchison St  
St Leonards, NSW 2065

### VICTORIA

**Saturday, 25 November 2017**

Henry Schein Halas  
Level 9 - 369 Royal Parade  
Parkville, VIC 3052

8AM - 5PM

COST:

Early Bird \$1500

Standard \$1650

Register Online: Fill out the online form and pay via credit card at:  
[www.highlandspd.com.au/enrol](http://www.highlandspd.com.au/enrol)

Block bone grafting & sinus lifting are the most common treatment options used in situations of severe loss of alveolar bone for dental implant treatment. It is important to understand the treatment options available to the patient when it comes to bone grafting procedures. Block bone grafting and sinus lifting are complex regenerative procedures for very experienced clinicians and specialists. This course will give you hands-on, in depth knowledge of these treatment options and risk analysis. It will give you a thorough platform for skill development and is recommended that you have completed Course 1 Atraumatic Exos & Socket Regeneration prior. Please be aware that complex procedures should always be performed on patients after numerous pre-clinical simulations and then under strict supervision & mentorship of an experienced clinician.

#### Didactic component:

- Anatomy of the maxillary sinus for the purpose of lateral & transcrestal sinus grafts
- Anatomy of the chin & ramus for bone block harvesting purposes
- Diagnosis of pathology in the sinus and when to refer to ENT physician
- CBCT scan analysis, risk assessment, treatment planning and treatment sequence
- Donor sites- ramus, chin, bone substitutes
- Use of Piezo surgery and specific instrumentation for complex grafting procedures
- Flap designs & layered suturing techniques
- Patient post-operative care
- Patient cases with history, assessment, treatment options, step-by-step treatment

#### Hands-on Component:

- Using pig jaws participants will prepare the harvest site & harvest a block of bone
- Prepare the donor site to fit the harvested bone
- Using a sheep maxilla participants will simulate a lateral sinus lift procedure
- Use piezo surgery, fixation screws, collagen membranes, membrane tacs, chisels, mallets
- Use of particulate bone around the site
- Complex flap designs, relieving incisions for tension free closure and suturing techniques

# Immediate Loading with TeethXpress with Interactive Surgical & Restorative Discussion

Presented by Dr Bobby Chhoker

## 18 CPD HOURS

The 3 day course is an exciting combination of lectures, live surgical discussion and hands on. You will leave the course with the knowledge of how to case select, plan, discuss and sell, perform and restore full arch cases using 4 angled implants and TeethXpress All-on-6 protocol.

This course is designed to not only enable you to have the knowledge to plan, perform and restore full arch cases all attendees will join part of a full arch support network after the course. As part of the network you will have access to discounts, educational materials and be able to attend and watch a live surgery and have a case planned and supported by Dr Bobby Chhoker.

### DAY 1 : CASE SELECTION, TREATMENT PLANNING AND PRESENTATION

Theoretical basis of full arch treatment with supportive literature and simple determination of which of the three main treatment pathways you should apply

- Case selection and assessment with emphasis on management and risk assessment. Treatment planning terminal cases, with particular attention to gross caries, severe loss of function and periodontal disease.
- Use of Radiology to predict ease of case and use of a surgical risk index to manage the case successfully
- Presentation and Marketing to increase exposure and uptake of treatment plans

### DAY 2 : SURGICAL TRAINING

- Surgical theory and application of surgical principles including all instrumentation and componentry
- Surgical checklist with detailed assessment of radiology and clinical presentation
- Surgery with specific details from anesthesia through to surgery and post-operative management
- Surgical and post-operative complications and how to manage them
- Practical hands on surgical demonstration

### DAY 3 : RESTORATIVE TRAINING

- Lab communication and prescription with record taking checklist for provisional appliance
- Immediate loading and conversion of surgical guide into short term provisional
- Occlusion theory in full with step-by-step guide to fitting a fixed full mouth appliance
- Provision of Titanium Hybrid and zirconia final prosthesis with detailed practical guide
- Prosthetic complications and how to manage them in the short and long term
- Maintenance and aftercare of the full mouth rehabilitation patient



## NEW SOUTH WALES

**Thursday 21 - Saturday 23 September 2017**

Henry Schein Halas  
Unit 1, 44 O'Dea Avenue,  
Waterloo, NSW 2017

Maximum 10 Attendees

8:30AM - 6PM

COST: \$3500

**ONLINE REGISTRATION** [www.henryschein.com.au/education](http://www.henryschein.com.au/education)

**Registration enquiries:** 1300 302 421 OR EMAIL [events@henryschein.com.au](mailto:events@henryschein.com.au)



# Retaining Patients to Achieve a Fully Booked™ Dental Practice

Presented by Carolyn S Dean

**2 CPD HOURS**

## Seminar

### Obtaining Practice Growth through Nurturing Relationships with your Existing Patients

Attracting patients to your practice is only the beginning. You need to understand how to build on relationships with your existing patients by using effective marketing tools and techniques to turn them into long-term patients.

Many practices make the mistake of focusing only on gaining new patients. They fail to effectively address the need to retain those they already have. Did you know that the most valuable asset that a practice has is its existing patient base? Every practice wants and needs new patients, but your surest and most predictable source of new revenue is right under your nose. It comes from the loyal patients who already know your practice.

It's also far easier to sell to existing patients than to new prospects. Acquiring new patients is expensive (five to ten times the cost of retaining an existing one), but the average spend of a repeat patient is a huge 67% more.

It has been shown that it can take between six to eleven times for patients to see or hear a message before they act on it. Do you know how many ways and how many times you are communicating with your patients?

'Don't put all your eggs in one basket' goes the old saying. When it comes to marketing your practice, there is no silver bullet. It is important that you see your practice marketing as a collation of strategies. Creating effective marketing with different patient touch points is key to your success. Your potential patients and existing patients need to experience a number of touch points all reinforcing your brand message before making the decision to come to you.

#### COURSE TOPICS

- Understand why patients leave
- How to develop internal marketing strategies
- Why use email newsletters
- When to use printed newsletters
- Using social media
- Holding dental open house events
- On-hold messaging
- Maximising recalls

## SOUTH AUSTRALIA

**Friday, 18 August 2017**

Henry Schein Halas  
311 Unley Road  
Malvern, SA 5061

4PM - 6:30PM

## NEW SOUTH WALES

**Tuesday, 29 August 2017**

ADIA NSW  
Unit 10, 85 Bourke Road  
Alexandria, NSW 2015

6PM - 8:30PM

## VICTORIA

**Wednesday, 30 August 2017**

Henry Schein Halas  
Level 9, 369 Royal Parade  
Parkville, VIC 3052

6PM - 8:30PM

## QUEENSLAND

**Monday, 4 September 2017**

Henry Schein Halas  
Ground Floor, 8 Gardner Close  
Milton, QLD 4064

6PM - 8:30PM

COST: \$75

Multiple: \$67.50

Return Participants: \$55



**ONLINE REGISTRATION** [www.henryschein.com.au/education](http://www.henryschein.com.au/education)

**Registration enquiries:** 1300 302 421 OR EMAIL [events@henryschein.com.au](mailto:events@henryschein.com.au)



# Setting Up for Success

Presented by Robyn Watson, Jane Rossi, Marcel Johnson and Deb Brown

## 2.5 CPD HOURS

.....

This course will provide participants with an understanding of what success means within the daily work environment, the ability to work with patients to set goal oriented outcomes for their oral health and be able to develop appropriate treatment strategies for successful patient outcomes.

### COURSE TOPICS

The workshop will highlight the following areas:

- Definition of success
- Goal setting
- Dental hygiene process of care
- Human needs theory
- Online risk management modalities
- SMART goals for Examination and reassessment/recare

### LEARNING OUTCOMES

Participants will be able to:

- Understand the definition of success for their patient and professional goals
- Manage patients using dental hygiene care plan and human needs theory
- Act as a coach to provide best practice for optimal oral health for their patients
- Describe the armamentarium needed for successful treatment outcomes
- Understand the integration of clinical and behavioural skills to create successful oral health outcomes



### SOUTH AUSTRALIA

**Tuesday, 4 July 2017**

Henry Schein Halas  
311 Unley Road,  
Malvern, SA 5061

### QUEENSLAND

**Tuesday, 4 July 2017**

Henry Schein Halas,  
8 Gardner Road,  
Milton, QLD 4064

### VICTORIA

**Thursday, 6 July 2017**

Henry Schein Halas,  
L9, 369 Royal Parade  
Parkville, VIC 3052

### NEW SOUTH WALES

**Tuesday, 8 August 2017**

ADIA NSW  
Unit 10, 85 Bourke Road  
Alexandria NSW 2015

6PM - 9PM

Cost: \$60

**ONLINE REGISTRATION** [www.henryschein.com.au/education](http://www.henryschein.com.au/education)

**Registration enquiries:** 1300 302 421 OR EMAIL [events@henryschein.com.au](mailto:events@henryschein.com.au)



How the best perform



# Communication for Success - Motivational Interviewing in Action

Presented by Jane Rossi

## SOUTH AUSTRALIA

Tuesday, 20 June 2017

Henry Schein Halas  
311 Unley Road  
Malvern, SA 5061

6PM - 9PM  
COST: \$60

## 2.5 CPD HOURS

A relaxed, informative and interactive workshop highlighting the fundamental strategies that support the practice of motivational interviewing (MI). This course will assist in understanding the rational, process and strategy that underpin the stages of MI. Global evidence has demonstrated positive clinical outcomes in MI, even in brief interventions, via counselling, support and evocation. This course will guide you through the steps towards successful communication with your patients and provide examples and strategies to implement MI as part of your routine practice to support patients towards optimal oral health.

**COURSE TOPICS:** The workshop will cover the following areas in detail:

### Understanding change management:

- Ambivalence – what is it and how can I work with it?
- Readiness Ruler
- Collaborate and empathise
- Show & tell – examination tools
- Nurture patient optimism and expertise

### The motivational interviewing spirit:

- Working as partners with your patient
- Practicing OARS leading to successful & effective communication

### Identify strategies that motivate change:

- Resist the need to lead or correct
- Enable autonomy, collaboration & evocation
- Clarify goals
- Affirm change talk
- Summarise and plan

### Planning for Instrument Maintenance

- Setting time aside
- When is the best time to sharpen
- Who should sharpen?

### Preserving Working-End Design

- Sharpening Armamentarium
- Sharpening stones
- Sharpening methods

### LEARNING OUTCOMES

Participants attending this workshop will explore and discuss the principles of motivational interviewing for the purpose of having a successful conversation towards changing behaviour. Attendees will gain an understanding of positive communication that will encourage and support their patient's autonomy in their own decision to initiate change towards improved oral and holistic health benefits. This method may be used in routine dental practice to modify and/improve the patient's risk profile.

**ONLINE REGISTRATION** [www.henryschein.com.au/education](http://www.henryschein.com.au/education)

**Registration enquiries:** 1300 302 421 OR EMAIL [events@henryschein.com.au](mailto:events@henryschein.com.au)



How the best perform

## Deb Brown

Deb is a Dental Hygienist with a Post Grad Diploma in Restorative Dental Hygiene (Canada). She has worked within a variety of settings and specialties providing care in Orthodontics, TMJ/Facial Pain, Special Needs/Medically Compromised, Geriatrics and General Dentistry. Deb currently practices part time in General dentistry as well as maintaining a role as a Clinical Demonstrator/Lecturer in Melbourne.



## Dr. David Cable *BDS Hons (1982), MSc (1990), FPFA (2000), FICD (2007)*

Dr David Cable is a specialist Endodontist in full time private practice, Sydney. He has been a Faculty member and held honorary teaching positions at the University of Sydney since graduation. David has a keen interest in emerging technologies with endodontic applications, beginning with lasers, transplplantation, irrigants and more recently the new imaging technologies. This lecture will focus on how CBCT imaging has dramatically improved endodontic diagnosis and will detail some of the more practical aspects of its implementation, data use and interpretation with respect to endodontics and trauma.



## Dr Tihana Divic-Resnik

*BDS, MSc, PhD*

Dr Tihana Divic-Resnik is a clinical lecturer in the Discipline of Periodontics at the University of Sydney. Previously, she was a lecturer in Periodontics and Oral Medicine at the University of Belgrade (Serbia) for 10 years, where she also practised as a specialist of Periodontology and Oral Medicine.



Dr Tihana Divic-Resnik was involved in several research projects in Europe. She gained her Master Degree by doing research on periodontal regeneration with synthetic bone graft (calcium sulfate) and PhD degree by researching the use of bone morphogenetic proteins BMP-2 in alveolar socket preservation. She has published her work in several international journals and presented it at numerous professional conferences. Her research interests lie mainly in the areas of periodontal therapy, bone regeneration and tissue management.

Tihana is a member of European Federation of Periodontology (EFP) and a certified instructor for iTOP oral prophylaxis program. As an educator she was involved in continued professional education for dentists and dental hygienists in Europe. As the team leader, she worked on promotion of oral hygiene programs in disadvantaged regions of Eastern Europe on a voluntary basis.

She is proud to become a member of Australasian team of Hu-Friedy educational consultants and to be able to present Hu-Friedy Educational Programmes to professionals in Australasia region.

## Dr Bobby Chhoker *BSc (Lond), BDS (Lond), MSc (Implant Dentistry), IADFE*

Dr Bobby Chhoker graduated from United Medical and Dental Schools of Guys and St Thomas' Hospitals (UMDS) in 1997. He then went on to complete a Masters Degree in Implant Dentistry at university level and was invited to become a member of the International Academy of Dental and Facial Aesthetics in New York. Dr Chhoker was principal of his own business Harley Street Dental Care in Harley Street London where there was an emphasis on implant treatment and TMJ Disorders. He has provided dental educational training programs for postgraduate dentists and members of the dental team possessing a variety of experience, from newly qualified through to experienced dental practitioners.

Dr Bobby Chhoker has worked alongside Sydney's leading clinicians and practices in full mouth rehabilitation and has lectured for several established implant companies. His roles have included all surgical and prosthetic aspects of implant dentistry as well as management of complications and mentoring.

- Senior Clinical Staff and Tutor GIFT Implant Dentistry Curriculum
- International Program Director GIFT Implant College
- Principal for Harley Street Dental Care Implant Clinic
- International Academy of Dental and Facial Aesthetics Invited Member
- Osteo-Ti Implants Mentor



## Carolyn S Dean

Carolyn S Dean is the author of "Fully Booked – Dental Marketing Secrets for a full appointment book" and is the Managing Director at 'My Dental Marketing'. Carolyn is a widely known seminar speaker and dental marketing consultant working extensively with dental professionals. Carolyn has over 21 years' experience in sales and marketing, working with some of the largest global IT organisations in the UK, USA, Europe, South Africa, Asia and Australia. Over the last 10 years she has specialised in the area of the dental, medical and health care profession. Carolyn is Managing Director at My Dental Marketing award winning specialist in marketing services and website design for dental, professionals. They currently manage a portfolio of over 300 practices. They provide marketing solutions solely in the dental space. As a consequence Carolyn has gained a deep understanding of profession's problems and pain points.



## Dr Shalin Desai

*BDS, Grad Dip P.H., D Clin Dent – Endodontics*

Dr. Shalin Desai has completed Doctor of Clinical Dentistry, specialising in the field of Endodontics from the University of Otago, New Zealand. Prior to specialisation, Shalin has spent considerable time practicing General Dentistry in public and private dental practices in Sydney. Shalin runs specialist practice in Bella Vista, Sydney and holds an honorary clinical educator position with University of Sydney. Shalin enjoys sharing his clinical knowledge with undergraduate dental students as well as local dentists via continual educational lectures and hands-on courses. Shalin has published several scientific papers in international journals and is passionate about providing the highest quality of evidence-based endodontic treatments.





## Dr. Raahib Dudhia

*BDS Sc Hons 1, D. Clin. Dent.  
(Dento-maxillofacial Radiology)*

Dr Raahib Dudhia completed his training in Dento-maxillofacial Radiology at The University of Queensland and has extensive experience in private radiology practices in Queensland and NSW, reporting conventional dental radiographs as well as CBCT, CT and MRI scans. Raahib has also teaches dental imaging to undergraduate and post-graduate students as well as dental assistants and radiographers. Recently, he has started an online Dental Radiology Consultancy, assisting practitioners with reporting and protocol advice, as well as providing a second opinion on scans taken in medical imaging practices.

Raahib has had access to CBCT since the early days, and has seen the maturation of CBCT technology into a highly valuable diagnostic tool in dentistry and medicine. A bit of a tech lover, he likes to keep up to date with new machines and CBCT viewers as they become available.



## Dr. Christopher Ho

*BDS Hons (SYD), Grad Dip Clin Dent (Oral Implants) (SYD), M. Clin. Dent. (Pros) (LON), D. Clin. Dent. (Pros) (SYD), RACDS (Pros), FPFA*

Dr Christopher Ho received his Bachelor of Dental Surgery with First Class Honours at the University of Sydney. He completed postgraduate studies in the Graduate Diploma in Clinical Dentistry (Oral Implants), and Doctorate in Clinical Dentistry (Prosthodontics) at the University of Sydney. He has also completed a Masters of Clinical Dentistry in Prosthodontics with Distinction from the University of London. He is a Fellow of the Pierre Fauchard Academy.

He is a Faculty member of the Global Institute for Dental Education, Honorary Clinical Teacher at Kings College London, and Board of Academy of Dental Excellence. He is author of numerous publications as well as editor of the textbook "Practical Procedures in Aesthetic Dentistry".

He is in private practice in prosthodontic and implant dentistry in Sydney, Australia.



## Marcelle Johnson

Marcelle Johnson is an Oral Health Therapist who graduated from the University of Adelaide with a Bachelor of Oral Health. Marcelle has worked as an OHT in both the public and private health sectors in and around Brisbane in a variety of areas including neuromuscular and sleep dentistry, paediatrics and more recently maintains practice in a small family surgery in Brisbane's North.

Marcelle currently course coordinates three clinical-based courses, lectures and supervises the Bachelor of Oral Health students at the University of Queensland, a position she has held since 2012. Prior to this Marcelle clinically supervised the undergraduate dental and oral health students at the University since 2008. Marcelle is passionate about geriatric oral health care and through her University and private practice commitments regularly attends nursing homes around Brisbane offering oral health assessments and treatment. In early 2014, she was offered the role as Aged Care Liaison for the Dental Hygienist Association Australia (QLD branch). In 2013, Marcelle delivered presentations to participants in the Hu-Friedy Master's program and has since come on board as one of Hu-Friedy's Australian educational consultants, a role she is extremely excited about.



## Dr Jeffrey Kho BDS Sc (Hons) (QLD)

Dr Jeffrey Kho graduated with honours from the University of Queensland in 2005. He was the President of the Dental Students Association, a clinical tutor at the University of Queensland, and is a Key Opinion Leader for several dental companies including Philips Zoom. He presents regularly both locally and nationally and manages to find time to also run three successful dental clinics in Brisbane.



## Dr Eric B. Lowenhaupt D.D.S.

Dr Eric B. Lowenhaupt, D.D.S. attended Florida State University for undergraduate studies and Emory University in Atlanta for his Dental and Orthodontic training. He completed a general practice residency and practiced general dentistry for six years before returning for his graduate orthodontic training at Emory University. Since 1986, he has been in the private practice of Orthodontics and Dentofacial Orthopedics in Florida.



## Dr Kurien Mamootil

*BDS Sc. GradDipClinDent. DCD FRACDS*

Dr Kurien Mamootil completed his undergraduate training in Dentistry in 1994 and his specialist training in Endodontics from the University of Melbourne in 2004. He has also completed his Fellowship with the Royal Australasian College of Dental Surgeons. Kurien has served as a clinical demonstrator and Examiner in the Specialist endodontic training program at the University of Melbourne and an examiner in Endodontics for the Australian Dental Council. He has been actively involved with the Australian Society of Endodontology serving as President of the society from 2012-2014. He remains on the Federal Council. Kurien maintains Specialist Endodontic practice in Geelong and Werribee in Victoria. He is actively involved in continuing education in Endodontics and has presented domestically and internationally.



## Marcus Marcussen

Marcus is a certified dental technician with many years of experience with CAD/CAM and has been working for 3Shape since 2013 as a Dental Application Specialist.

Marcus previously worked in Dental Laboratories in England and Denmark with responsibility for CAD/CAM, design and production within the Lab.



## Dr. Darryl Moses BDS (Syd Univ), FIAO, MSc Med (Sleep Medicine) (Syd Univ)

Dr Darryl Moses graduated from the University of Sydney in 1982 and is in private practice in Pennant Hills, Sydney. He is a Fellow of the International Association of Orthodontics and is a Senior Instructor with the International Association of Orthodontics. Darryl has obtained a Masters in Sleep Medicine from the Faculty of Medicine, University of Sydney and utilises CBCT in a multidisciplinary approach to diagnosis and treatment.



## Dr Steven Olmos *D.D.S.*

A leader in research and education for the professional global community, dedicated to improving the quality of life for all people.

Founder, TMJ & Sleep Therapy Centres International

Diplomate, American Board of Craniofacial Dental Sleep Medicine

Diplomate, American Board of Dental Sleep Medicine

Diplomate, American Board of Craniofacial Pain

Diplomate, American Academy of Pain Management

FAAOP, FAACP, FICCMO, FADI, FIAO



## Dr Steven Parker

*BDS (Hons), Grad Dip ClinDent (Oral Surgert), Grad Dip ClinDent (Conscious Sedation and Pain Control), FICD*

Dr Steven Parker operates a referral based oral surgical practice in North West Sydney where he provides treatment under general anaesthesia, intra-venous sedation, inhalation sedation and local anaesthesia. He also provides IV sedation services to Dental Practices for nervous and phobic patients. Steven has been involved in post-graduate training and continuing education for over fifteen years and has lectured widely throughout Australia and overseas. He also delivered practical courses on Advanced Local Anaesthesia and Everyday Oral Surgery for General Practitioners.

Steven completed his Dental degree (with honours) at the University of Queensland in 1985. He has since completed postgraduate diplomas in both oral surgery (Otago University 1997) and sedation and pain control (University of Sydney 2000). Additionally, he is on the board of directors at the Hospital for Specialist Services where he also serves as the dental/oral surgery representative on the Medical Advisory Committee.



## Dr. Oliver Pope

*BDS (Hons), DCD (Endo)*

Dr Oliver Pope graduated from the University of Queensland in 2006 and was awarded a Bachelor of Dental Science with First Class Honours. After multiple overseas deployments as a Dental Officer in the Royal Australian Navy and several years of general dental practice, he commenced a Doctorate of Clinical Dentistry in Endodontics. He completed his Doctorate at the University of Melbourne and was awarded the inaugural Ephraim Ehmann Prize in Endodontics for best overall performance in the degree. Oliver's research into the clinical applications of Cone-Beam Computed Tomography has been published in the Journal of Endodontics. Oliver is passionate about teaching and educates both overseas-trained and local dentists in addition to teaching positions at the University of Melbourne and La Trobe University. Oliver regularly lectures locally and overseas. Oliver is a member of the Australian Dental Association, Australian Society of Endodontics and the Australian and New Zealand Academy of Endodontists.



## Dr Linda Quach

*BDS(Hons), Post Grad Dip Dental Implantology, General Dentist*

Dr Linda Quach completed Dentistry at The University of Sydney with honours. Some research in ceramics led to the start of her adventure into ceramic restorations and the co-authoring of four peer-reviewed journal articles. With influence from Max, Linda continued formal studies to complete a Post Graduate Diploma in Dental Implantology with distinction at Charles Sturt University. Linda's professional interests lie in general dentistry and in particular diagnosis, treatment planning, direct composite, indirect ceramic restorations and CAD-CAM technology.



## Dr Sal Shahidi

*BMedSc, BDent (Hons), FRACDS*

Dr Sal Shahidi graduated with a Bachelor of Medical Science and Bachelor of Dentistry with Honours from the University of Sydney. He then went on to obtain a Fellowship with the Royal Australasian College of Dental Surgeons prior to completing his Doctor of Clinical Dentistry in Periodontics.

Dr Shahidi has been working in private practice since 2006 and has also been involved in teaching in the undergraduate program within the discipline of Oral Surgery and Periodontics. He is a member of the Australian and New Zealand Academy of Periodontists and the International Team for Implantology.



## Associate Professor Axel Spahr

*Dr. Med. Dent. HABIL.*

Axel Spahr is Head of Periodontics at the Sydney Dental Hospital and Head of the Discipline of Periodontics at the University of Sydney.

A/Prof. Spahr is the former Head of Periodontics at the University of Ulm in Germany and has worked at various international universities and research facilities. He has additional training in microbiology, molecular biology, extensive experience in basic science research, animal research and clinical research. A/Prof. Spahr's research interest includes periodontal regeneration, bone regeneration, periodontitis and systemic diseases as well as antimicrobial therapy. He has lead large externally funded research projects and is collaborating with leading international research groups and companies in the field of periodontology, implantology and bone regeneration. He is author of numerous publications in international peer-reviewed dental and medical journals and has presented his work on professional conferences worldwide. A/Prof Spahr is a Board Registered Periodontal Specialist and is the current Secretary of the Periodontal Research Group of the International Association of Dental Research (IADR).



## Dr Jeremy Vo *BDS*

Dr Jeremy Vo obtained his BDS from the University of Adelaide. He then went on to complete a Doctor of Clinical Dentistry from the University of Sydney in Periodontics. Following completion, he was also awarded membership into the Royal Australasian College of Dental Surgeons. Dr Vo has been awarded with separate research grants in the fields of periodontology and craniofacial biology. Currently, working in private practice in Sydney since 2009, Dr Vo has also been a visiting clinical demonstrator for the DMD program at the University of Sydney. He holds membership with the Australian and New Zealand Academy of Periodontists and the International Team for Implantology. Dr Vo has been an invited speaker at conferences in Australia and lectures on topics including some of the latest concepts in the management of periodontal diseases.





## Dr Jeff Ward

*BDS, MDSc, GradDipClinDent, MRACDS(Endo)*

Dr. Jeff Ward obtained his BDS with Distinction from The University of Otago in 1996 followed by his GradDipClinDent and MDSc from The University of Melbourne in 2002. Jeff works in a full-time specialist Endodontic practice in Collins Street, Melbourne and teaches in the endodontic programme and continuing education courses at the University of Melbourne. Jeff has lectured throughout Australia, Asia and New Zealand and he has published several articles in endodontic journals with particular reference to the management of fractured endodontic instruments and vital pulp therapy. Jeff has a special interest in rotary NiTi instruments and the use of operative microscopes in endodontics, which he has used continuously and exclusively since 1999.



## Dr David Cox *BDS* (QLD),

*Clinical Assoc University of Syd.*

Dr David Cox achieved a Bachelor of Dental Science from the University of Queensland in 1982. Establishing David Cox Dental over twenty-five years ago after working in the UK, Dr David Cox has become a prominent figure within the dental industry. Dr David Cox tutored in Sedation Dentistry and the utilisation of Nitrous Gas, as well as being the past Secretary of the Implant Society. He is a member of the European Society of Laser Application and the Co-ordinator of Cosmetic Reconstruction within the practices. David lectures both nationally and internationally on lasers in dentistry and was the founding president of the Australian Association for Laser Dentistry.



## Associate Professor Max Guazzato

*DDS(Hons 1), PhD, DClinDent (Pros), FRACDS, MRACDS, FPFA, FICD*

Prosthodontist A/Prof of Oral Rehabilitation University of Sydney Associate Professor Max Guazzato finished Dentistry with first place and honours at the University of Milan and continued further with postgraduate training in Oral Surgery. Prior to University studies Max completed a 5 year full time Dental Technician diploma at Milan Technology College. After over a decade in private practice and University lecturing, Max moved onto a PhD at Sydney University in the field of Zirconia and dental ceramics and then completed a three year clinical doctorate in Prosthodontics and is registered as a specialist Prosthodontist. Max has a dental fellowship by examination and is a prosthodontics special fellow member of the Royal Australasian College of Dental Surgeons.



## Robyn Watson

Robyn Watson received her Dental Hygiene education at the University of Pennsylvania, her Bachelor's degree in Dental Auxiliary Education at the University of North Carolina and her Master's in Public Administration in Health Services Management from Golden Gate University in San Francisco.



After practicing and teaching in the US for many years, she returned to her home country of New Zealand in 1994 to participate in the introduction of the first school of Dental Hygiene in New Zealand. Since that time, Robyn has been on the Faculty of the Otago School of Dentistry, the Otago Polytechnic and helped with the development of the BSC in Oral Health at the Auckland University of Technology. She was also a Senior lecturer, and NZDHA representative to the Oral Health Advisory Board for the university. Since 2010, Robyn has been a Lecturer in the Department of Periodontics at the University of Sydney.

She has served as President and Vice-President of the NZDHA and sat on the New Zealand Dental Council for 6 years. She served on the Oral Health Advisory Group to the Ministry of Health and the New Zealand Dental Health Foundation for four years.

In March 2013, Robyn was invited to attend the Senior Dental Leaders seminar at Harvard University in Boston and has recently been selected as the President-Elect of the International Federation of Dental Hygienists, where she also chairs the Education and Research Committee. She served on the House of Delegates of IFDH for 12 years as the New Zealand representative.

## Jane Rossi

Jane Rossi is an oral health senior lecturer and scientific liaison. She has worked as a program leader and convenor of the Advanced Diploma of Oral Health (Dental Hygiene) at TAFE SA.



She held a lecturing position at the University of Adelaide (Bachelor of Oral Health) co-ordinating Clinical Practice and Dental Health Science and lecturing in Human Biology.

Jane has been a member on three Bachelor of Oral Health accreditation teams for the Australian Dental Council and has represented the Australian Dental Hygiene Association as state and national president. She has worked on many professional committees in the pursuance of oral health curriculum, education and training and industry business. Jane is a registered Dental Hygienist and has the following professional qualifications: Dental Hygiene, Degree in Adult and Vocational Education, Diploma in Management and Training and Assessment.

# Free hands-on sessions with the



Discover the benefits to you, your practice  
and your patients.

Evenings held all over the country each quarter



Computer  
Controlled  
Anaesthesia  
Delivery System

Register your interest here:

NSW: [nswsalesupport@henryschein.com.au](mailto:nswsalesupport@henryschein.com.au)

QLD: [qldsalesupport@henryschein.com.au](mailto:qldsalesupport@henryschein.com.au)

VIC: [vicsales@henryschein.com.au](mailto:vicsales@henryschein.com.au)

SA: [saadmin@henryschein.com.au](mailto:saadmin@henryschein.com.au)

# RELY ON US

for education

 HENRY SCHEIN® | HALAS |  Rely on Us®