



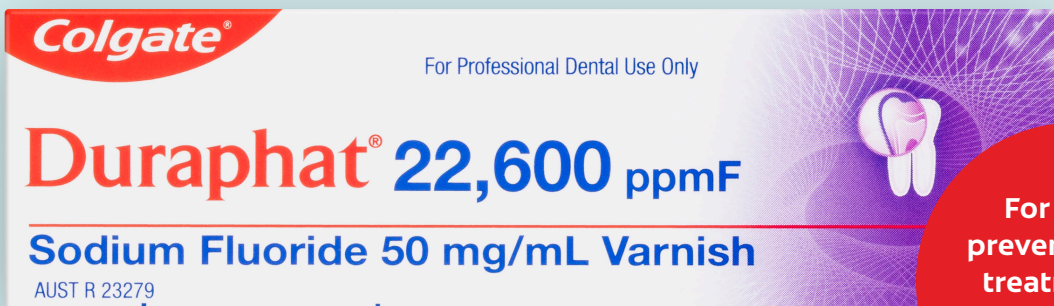
Colgate®

Available exclusively from

 HENRY SCHEIN®

Duraphat®

5% w/v Sodium Fluoride Varnish (22,600 ppmF)



For Caries
prevention and
treatment of
hypersensitive
teeth

**Duraphat® was first developed in the 1960's¹
and is the most commonly used
Fluoride Varnish in Australia today⁵**

Evidence for the use of topical fluorides

Cochrane reviews of randomised controlled trials (on people using the product as directed) have shown fluoride to be effective in preventing dental decay.

Caries prevented fraction

Varnish: 43%

(CI 30-57%[^])

Rinse: 26%

(CI 23-30%[^])

(Primary teeth 37%) (CI 24-51%[^])

Gel: 28%

(CI 19-37%[^])

Toothpaste: 24%

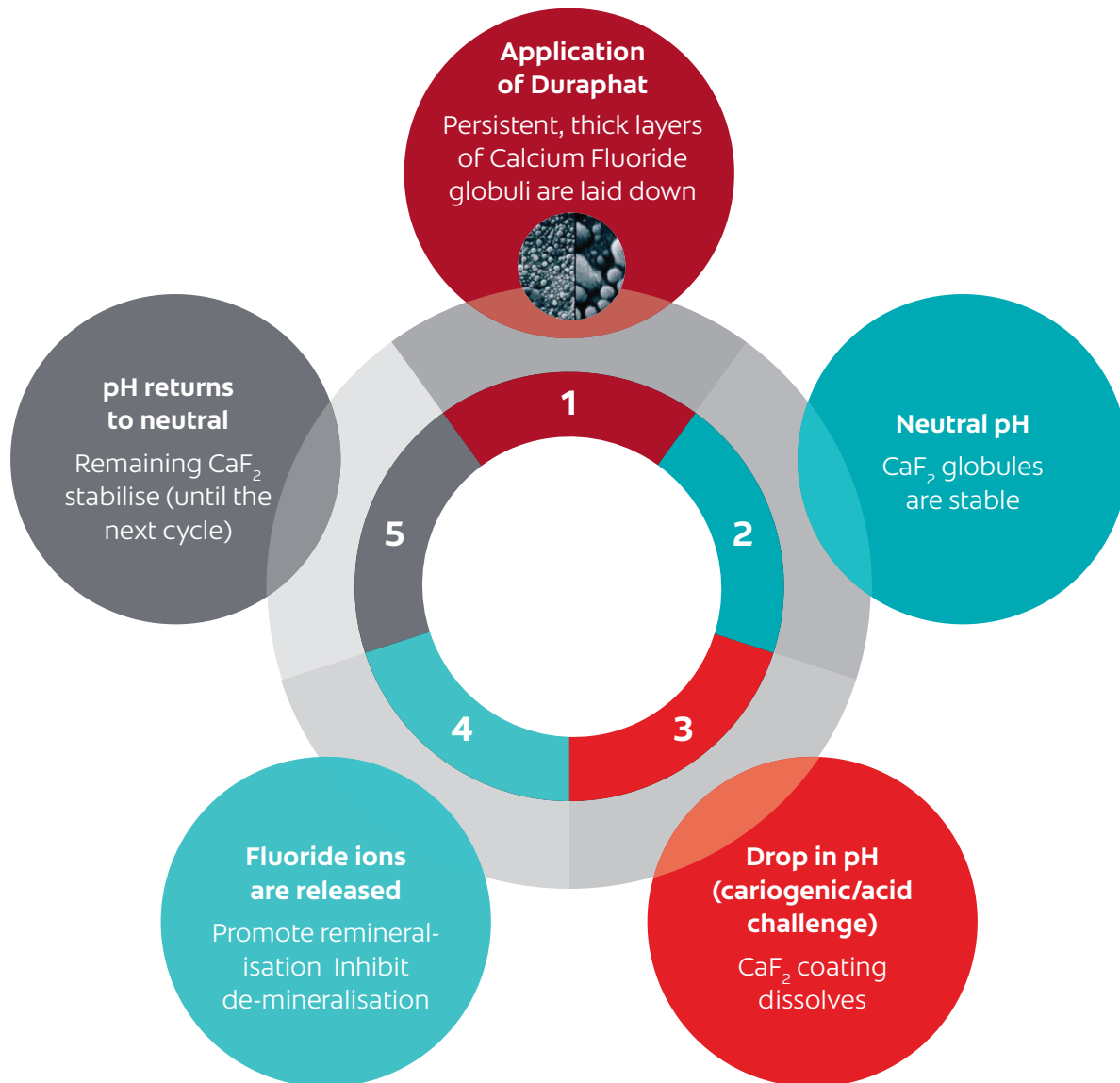
(CI 21-28%[^])

[^]95% Confidence Interval.

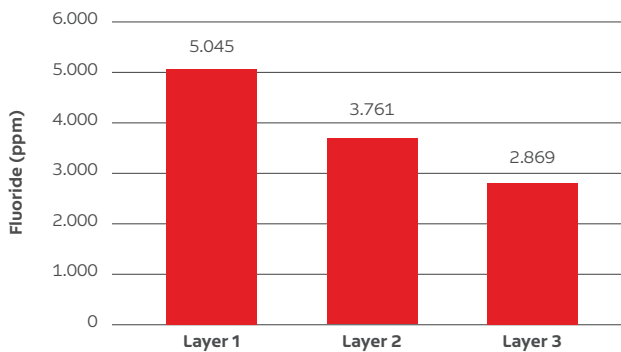
Prevented fraction is the percentage reduction in D(M)FS/d(e)fs in the test population vs placebo/no-treatment.²

1. Seppä L. Fluoride varnishes in caries prevention. Med Princ Pract. 2004; 2. Marhino, V.C. (2014). Cochrane fluoride reviews: an overview of the evidence on caries prevention with fluoride treatments. Faculty Dental Journal; Vol 5 (2); 5. LG Do, Guidelines for use of fluorides in Australia: update 2019 Australian Dental Journal 2020; 65: 30-38.

How does Duraphat® work?

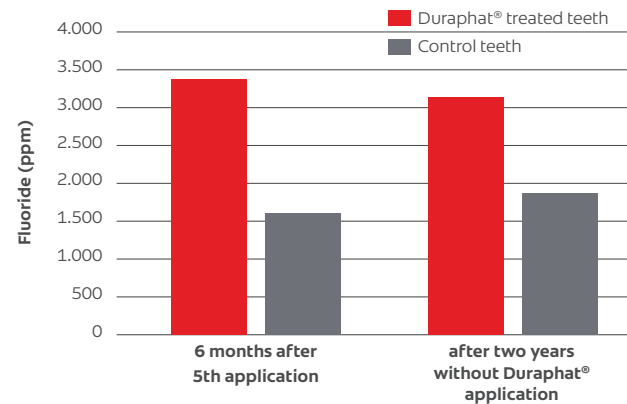


Colgate® Duraphat® Fluoride Varnish proven integration into tooth enamel³



Measurement of fluoride content of 3 subsequent enamel layers after a single Colgate Duraphat® Varnish application, according to FDA procedure 40³

Long lasting effect of Colgate® Duraphat® Fluoride Varnish application⁴



Semi-annual Colgate Duraphat® Varnish application over 3 years in 132 children: the fluoride content of the enamel was measured 6 months after the 5th application and 2 years after the last application.⁴

3. Sound enamel fluoride uptake from professionally applied varnishes, Dental product Testing Number 07-110, internal report, Colgate-Palmolive Company;
4. Seppa L. Fluoride content of enamel during treatment and 2 years after discontinuation of treatment with fluoride varnishes. Caries Res 18, 278-281, 1984.

Are you considering all your patients who are at an increased risk of Caries and Hypersensitivity for Fluoride Varnish application?



Children

- Colgate Duraphat® helps to prevent early childhood caries effectively: up to 83% of children who remained in the study were caries-free after 2 years⁶
- Colgate Duraphat® Varnish application twice a year reduces caries in first permanent molars by 38%⁷

Orthodontics

- Colgate Duraphat® reduces early carious lesion (white spot lesion) depth by 48%⁸
- Colgate Duraphat® reduces early carious lesion (white spot lesion) depth by 76% (in vitro)⁹

Hypersensitivity

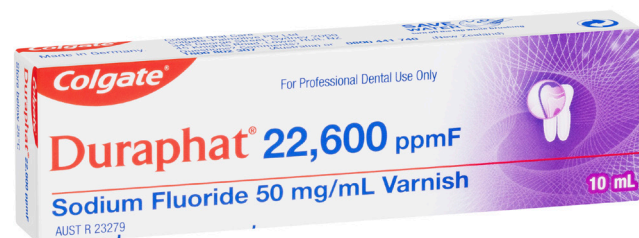
- Colgate Duraphat® Varnish applied over 4 weekly visits significantly reduced sensitivity ($p < 0.005$)¹³

Adults

- Colgate Duraphat® Varnish is proven to reduce new approximal lesion development by over 60% in high risk groups¹⁰
- Colgate Duraphat® Varnish application decreased caries incidence in root surfaces by more than 50%¹¹

Secondary Caries

- Colgate Duraphat® Varnish significantly slowed down lesion progression¹²



Fluoride Varnish should be applied at least twice per year for Caries Prevention¹⁴

6. Weintraub et al.: Fluoride varnish efficacy in preventing early childhood caries. J Dent Res 85(2), 172-176, 2006; 7. A 24-month study comparing sealant and fluoride varnish in caries reduction on different permanent first molars. J Public Health Dent. 57(3): 184-186,1997; 8. Ögaard et al. Microradiography and confocal laser scanning microscopy applied to enamel lesions formed in vivo with and without fluoride varnish treatment; 9. Arends & Schuthof: Effect of Fluoridation on Lesion Depth and Microhardness Indentations of Artificial White Spot Lesions. Caries Res 15, 176-178, 1981; 10. Moberg Sköld et al.: Effect of school-based fluoride varnish programmes on Approximal caries in adolescents from different caries risk areas Caries Res 39,273-279,2005; 11. Schaecken et al. Effects of fluoride and chlorhexidine on the microflora of dental root surfaces and progression of root-surface caries. J Dent Res 70 (2), 150-153, 1991; 12. Fontana et al. Inhibition of secondary caries lesion progression using fluoride varnish. Caries Res 36,129-135, 2002; 13. Gaffar A. Treating hypersensitivity with fluoride varnishes. Compend Contin Educ Dent 20(1) Spec Iss, 27-32, 1999. 14. Douglas et al (2016) Using High Fluoride Concentration Products in Public Policy: A Rapid Review of Current Guidelines for High Fluoride Concentration Products.



Duraphat® Fluoride Varnish Application Instructions

Colgate Duraphat Varnish is intended for use in children and adults. Fluoride containing preparation with deeply penetrating action for caries prevention and treatment of sensitive teeth.

Composition

1mL suspension contains 50mg sodium fluoride (5% w/v), equivalent to 22,600ppm fluoride ion (22.6mg fluoride) in an alcoholic solution of natural resins.

Indications

Caries prevention by deep penetration with fluoride. Desensitisation of sensitive teeth.

Dosage

For primary teeth up to 0.25mL (5.65mg fluoride). For mixed dentition up to 0.40mL (9.04mg fluoride). For permanent dentition up to 0.75mL (16.95mg fluoride). For caries prevention, the application is usually repeated every 6mths but more frequent applications (every 3 month) may be made. For hypersensitivity, 2 or 3 applications should be made within a few days.

Dosage Pads available on request.

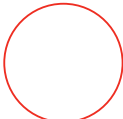
Duraphat® Varnish



Up to 0.25mL
for primary teeth



Up to 0.40mL
for mixed dentition



Up to 0.75mL
for permanent dentition



Instructions for Use

- 1 If necessary, clean the teeth especially at the sites most susceptible to caries.
- 2 Clear one or two quadrants of excessive saliva. Dispense the correct amount of Colgate Duraphat from the tube onto an application/dosage pad. Apply to teeth using a cotton applicator, probe or brush, painting and dabbing repeatedly to form a thin layer. Then treat the next quadrants in the same manner.
- 3 It is advisable to begin by applying the varnish to the teeth in the lower jaw before too much saliva collects. It may not be necessary to paint the lingual surfaces, as these are generally more caries resistant. Colgate Duraphat should preferably be applied to those spots most susceptible to caries attack.
- 4 The yellowish colour of Colgate Duraphat greatly facilitates its application and control. Colgate Duraphat sets in the presence of saliva. The effect of Colgate Duraphat is dependent on the prolonged activity of fluoride. The varnish film should not be removed prematurely. Patients should be advised not to brush their teeth or chew hard food for at least 4 hours after treatment. During this time fluids and soft foods may be consumed.

Australia: **Duraphat Varnish Contains:** Sodium fluoride 5% w/v (22, 600 ppm F). **Indications:** Prevention of caries. Treatment of sensitive teeth. **Colgate-Palmolive Pty Ltd. Sydney NSW, Australia.**

New Zealand: **PRESCRIPTION MEDICINE – Contains:** Sodium fluoride 5% w/v (22, 600 ppm F). **Indications:** Caries prevention by deep penetration with fluoride. Desensitisation of sensitive teeth. **Contraindications:** Hypersensitivity to colophony (natural resin), and/or any other constituents of Duraphat, ulcerative gingivitis, stomatitis and bronchial asthma. **Precautions:** Not for systemic treatment. Not to be swallowed. 33.8% ethanol content. Avoid use in pregnant or lactating women. **Colgate-Palmolive Ltd. Lower Hutt, NZ**

To find out more, or to buy, contact your Colgate Oral Care Consultant or the Colgate Call Centre on 1800 262 111 (AU) or 0508 265 4283 (NZ) for more information. Exclusively for Dental Offices.

Available exclusively from



1M1M145474/0921