

THE PERFECT FLOW

G-CEM™ Veneer

Light-curing resin cement for high aesthetic demands with ease of placement.



3M

G-CEM Veneer – The perfect flow

Introducing G-CEM Veneer: predictable aesthetics, high mechanical properties and unique flow.*

G-CEM Veneer has all the ingredients to deliver a stunning result for a confident smile. The secret is in its optimally balanced formula with **Full-coverage Silane Coating (FSC) technology**. This innovative filler treatment allows a high filler rate to be achieved with homogeneous repartition of fillers in the matrix. The result: **unique handling and excellent physical properties**.*

Full-coverage Silane Coating (FSC)

G-CEM Veneer is made using the **latest innovation in filler technology (Full-coverage Silane Coating, FSC)**. The surface of the fillers is almost fully coated by the silane coupling agent, offering a perfect connection between the fillers and the matrix. This new technology enables dispersion of a **higher percentage of fillers (filler rate 69% w/w)** in a very efficient way and leads to a **thixotropic consistency**.

Advantages of thixotropy

- G-CEM Veneer stays in place when untouched, but is fluid when put under pressure.
- G-CEM Veneer covers the entire surface of a restoration uniformly without voids, while the film thickness is kept to a minimum.
- G-CEM Veneer is not sticky; it is easy to apply with high precision and it allows easy excess removal.
- G-CEM Veneer's unique consistency allows for an optimally balanced flow, without the need for preheating.
- G-CEM Veneer is well suited for the cementation of aesthetic restorations and offers high colour stability.



* GC R&D Data on file

Predictable Aesthetics

Superior performance*

G-CEM Veneer is highly filled and extremely resistant to wear and highly colour stable. With G-Premio BOND and G-Multi PRIMER, it provides high bond strength for durable, aesthetic restorations.[^] It has mechanical properties similar to paste-like composites, yet with ease of handling.



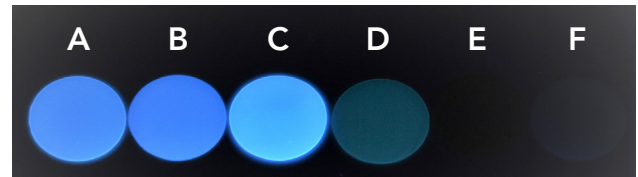
Images courtesy of Dr. J Mattiussi, Italy



Natural aesthetics

G-CEM Veneer adapts to all demanding aesthetic cases, by providing a natural result with high colour stability.

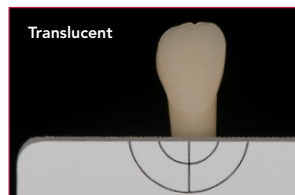
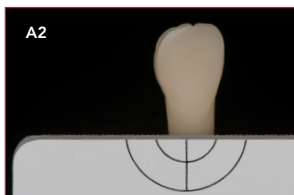
G-CEM Veneer's fluorescence is adjusted to that of natural teeth. It will appear unnoticeable under all light circumstances.



Fluorescence of 0.5 mm disks. A: G-CEM Veneer; B: Product A; C: Product B; D: Product C; E: Product D; F: Product E

Four shades cover all

Four shades with optimised blend-ability were carefully selected for perfect colour integration in all cases while minimising the required number of shades. Use of the try-in pastes will aid in the verification of the selected shade for the desired aesthetic result.



[^] K. Sai et al. (2016). Influence of degradation conditions on dentin bonding durability of three universal adhesives. Journal of Dentistry 54 (2016) 56–61.

* GC R&D Data on file

Simplicity combined with reliability

Combined with G-Multi PRIMER, a universal primer, and G-Premio BOND, a universal bonding agent, G-CEM Veneer is purposely designed to deliver stable and durable adhesion[^] to all types of substrates and preparations. Cementation of veneers, inlays and onlays becomes truly standardised.



G-Premio BOND

G-Premio BOND is a truly universal adhesive, purposely designed to bond to all preparations for strong and durable adhesion[^]. G-Premio BOND contains three functional monomers to bond to every preparation, whether it is to dentine, enamel, metal or composite.

G-Premio BOND can be used in both etching modes recommended for thin restorations like veneers: selective etching of enamel or total etch.

After light-curing, the bonding layer is thin and uniform, allowing a perfect adaptation of the restoration.



G-Multi PRIMER

G-Multi PRIMER is a universal primer using three different chemical agents to ensure a durable adhesion in all situations. By adding silane to the primer and not to the bonding agent, stability of the adhesion is assured.*

[^] K. Sai et al. (2016). Influence of degradation conditions on dentin bonding durability of three universal adhesives. Journal of Dentistry 54 (2016) 56–61.

* GC R&D Data on file



G-CEM Veneer

Excellent polymerisation*

G-CEM Veneer can be efficiently light-cured through restorations <2 mm with sufficient translucency. Indicated for composite and ceramic veneers, inlays and onlays.

Extremely wear-resistant*

The smooth and glossy surface is maintained over time due to high wear resistance, preventing marginal gap formation, and withstanding discolouration. The FSC technology and improved matrix prevent particle loss ensuring a homogeneous distribution of the fillers.

Low film thickness

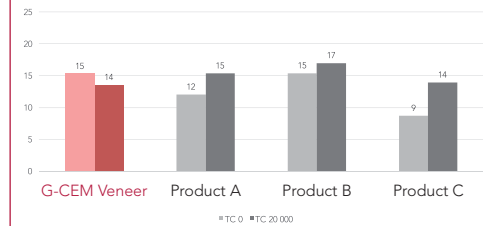
The benefit of combining strength with the perfect flow: a high-quality fit, without the need for preheating!



G-CEM Try-in Paste

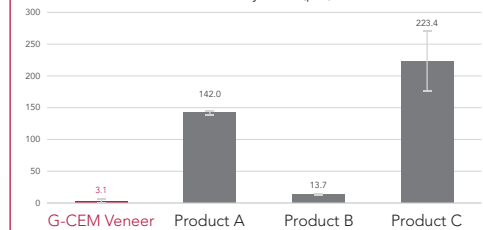
The shades of G-CEM Try-in Paste perfectly match the four shades of G-CEM Veneer. They are water-based for easy removal after application.

Bond strength to enamel (MPa)
before and after thermocycling (20 000 cycles)



Source: GC R&D, Japan. Data on file*

Three-body wear (µm)



Source: GC R&D, Japan. Data on file*

Simple application steps

1. Before



Four aesthetic shades

G-CEM Veneer comes in four different shades. They were carefully selected to cover all aesthetic needs.

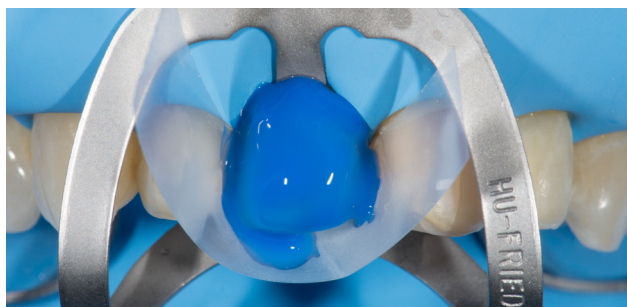
2. Restoration try-in



Predictable shade integration

With the use of G-CEM Try-in Paste, you can easily predict the final colour match. It helps in selecting the correct shade and opacity.

3. Preparation etching



Choose your etching mode

Etch the enamel margins or use a total-etch approach for minimal preparations that are localised mainly in the enamel.

4. Apply G-Premio BOND



Bonding to all substrates

G-Premio BOND is purposely designed to bond to all substrates[^]. It is separately cured with a very low 3µm film thickness and it does not interfere with the seating of the restoration.

[^] K. Sai et al. (2016). Influence of degradation conditions on dentin bonding durability of three universal adhesives. Journal of Dentistry 54 (2016) 56–61.

5. Apply G-Multi PRIMER



Bonding to all restorations

After correct pre-treatment (etching or sandblasting), G-Multi PRIMER ensures stable adhesion* to all aesthetic restoratives.

7. Excess removal



Easy clean-up

Tack-curing for 1-2 seconds before removal is optional. After the final light curing, margins can be easily finished and polished to a high gloss to minimise plaque retention.

6. Cementation



Precise application

Thixotropy and long working time allow for precise application.

8. Final



Durable outcome

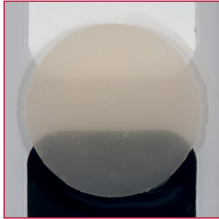
High colour stability combined with excellent mechanical properties: a high-quality, durable and aesthetic fit.*

Images courtesy of Dr. J Tapia Guadix, Spain

* GC R&D Data on file

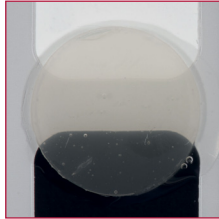
G-CEM Veneer

Unique handling, superior strength*



A2

The standard for luting most of your prosthetic pieces



Translucent

Designed for very thin restorations to preserve the natural shade.



Opaque

Used to mask discoloured substrates when needed



Bleach

Used to increase opacity and brightness when pearly white teeth are desired.

G-CEM Veneer

G-CEM Veneer Starter Kit

2 x G-CEM Veneer Refill A2 & TR, 2 x Try-in Paste Refill A2 & TR, 1x G-Multi PRIMER, 1x G-Premio BOND, 45x needle tips

G-CEM Veneer Refill 1 ml (1.7 g) + 10 dispensing tips

G-CEM Veneer A2

G-CEM Veneer Translucent (TR)

G-CEM Veneer Opaque (OP)

G-CEM Veneer Bleach (BL)

G-CEM Try-in paste 1.2 ml (1.5 g)

G-CEM Try-in Paste A2

G-CEM Try-in Paste Translucent

G-CEM Try-in Paste Opaque

G-CEM Try-in Paste Bleach

Related products

GC dispensing tips regular needle (30 pcs)

GC dispensing tips long needle (30 pcs)

GC G-Multi PRIMER 5 ml

GC G-Premio BOND, Refill 5 ml

G-CEM Try-in Paste, G-CEM Veneer, G-Multi PRIMER and G-Premio BOND are trademarks of GC.

* GC R&D Data on file

Always read and follow the instructions for use. The products cited in this publication are for professional use only and are only available for sale to health professionals. In rare cases, the products cited in this publication may cause sensitivity in some people. If any such reactions are experienced, discontinue the use of the products and refer to a physician. For more information visit www.gcaustralasia.com or contact your GC specialist.



Since 1921
Towards Century of Health

GC Australasia Dental Pty Ltd
1753 Botany Road Banksmeadow
NSW 2019 Australia

T: +61 2 9301 8200
E: info.australasia@gc.dental
www.gcaustralasia.com