

GC COMPOSITE PORTFOLIO

YOUR TOOLS FOR SUCCESS

GC

The perfect match for all your needs

GC composites are designed utilising optimised properties for outstanding performance both functionally and aesthetically. The full GC range of composites allows you to choose your preferred handling and shade system that will ensure predictable aesthetic outcomes. GC's filler technologies offer excellent physical properties to achieve durability, wear resistance and polish retention. Each of our universal composites showcases a high level of quality that is core to GC's product philosophy.

	Essentia® LD, MD, DD	Essentia® LE, DE	Essentia® U	Essentia® ML	Essentia® LoFlo	Essentia® HiFlo	G-ænial A'CHORD®	G-ænial® Anterior
	PAGE 4	PAGE 4	PAGE 4	PAGE 4	PAGE 4	PAGE 4	PAGE 6	PAGE 8
Viscosity	Paste	Paste	Paste	Injectable	Injectable	Flowable	Paste	Paste
Composition	Micro-HDR hybrid	Ultra-fine hybrid	Micro-HDR hybrid	Ultra-fine hybrid	Ultra-fine hybrid	Ultra-fine hybrid	Ultra-fine hybrid	Micro-HDR hybrid
Main indication	Universal	Universal	Universal	Universal	Universal	Universal	Universal	Anterior
Syringe delivery	✓	✓	✓	✓	✓	✓	✓	✓
Syringe volume	2mL	2mL	2mL	2mL	2mL	2mL	2.1mL	2.7mL
Unitip delivery	✓	✓	✓	-	-	-	✓	✓
Unitip volume	0.16mL	0.16mL	0.16mL	-	-	-	0.16mL	0.16mL
Number of shades	3	2	1	1	1	1	14	22
Filler content (%w/w)	76%	81%	81%	69%	69%	69%	82%	76%
Radiopacity	142%	291%	252%	181%	181%	303%	318%	142%
Depth of cure	1.5-2.0mm	2.5mm	2.5mm	1mm	2mm	2mm	2.0-2.5mm	1.5-3.5mm
Working time	240 sec.	220 sec.	120 sec.	70 sec.	70 sec.	75 sec.	160 sec.	240 sec.
Shelf-life	3 years	3 years	3 years	3 years	3 years	3 years	3 years	3 years

COMPOSITE SUBSTRUCTURE

	G-ænial® Posterior	G-ænial® Universal Injectable	G-ænial® Universal Flo	G-ænial® Flo X	Gradia Direct X	everX Flow®	everX Posterior®
	PAGE 8	PAGE 10	PAGE 11	PAGE 11	PAGE 12	PAGE 14	PAGE 14
Viscosity	Paste	Injectable	Injectable	Flowable	Paste	Flowable	Paste
Composition	Micro-HDR hybrid	Ultra-fine hybrid	Ultra-fine hybrid	Ultra-fine hybrid	Micro-hybrid	Fibre-reinforced	Fibre-reinforced
Main indication	Posterior	Universal	Universal	Universal	Posterior	Posterior; core build-up	Posterior
Syringe delivery	✓	✓	✓	✓	✓	✓	-
Syringe volume	2.7mL	1mL	2mL	2mL	2.7mL	2mL	-
Unitip delivery	✓	✓	-	-	✓	-	✓
Unitip volume	0.16mL	0.16mL	-	-	0.16mL	-	0.13mL
Number of shades	6	16	15	4	10	2	1
Filler content (%w/w)	81%	69%	69%	69%	77%	70%	77%
Radiopacity	252%	252%	181%	303%	214%	223%	290%
Depth of cure	2.0-3.0mm	1.5-2.5mm	1.5-2.0mm	1.5-2.0mm	2.0-3.5mm	2-5.5mm	4mm
Working time	120 sec.	100 sec.	70 sec.	75 sec.	150 sec.	90 sec.	90 sec.
Shelf-life	3 years	3 years	3 years	3 years	3 years	3 years	2 years

Essentia

Aesthetics brought back to Essentials

Key advantages

- A simplified range of 7 shades – 3 dentins, 2 enamels and 1 universal shade
- High aesthetic results made simple with a bilaminar concept that aims to mimic the natural ageing of teeth
- High gloss retention*, thanks to the ultra-fine filler particles used in the enamel shades
- Optimal handling for each of the shades
- Low inventory: Only 7 syringes for all your cases
- Characterisation options with Essentia modifiers for high-end aesthetics
- Effective masking liner¹ to block discolouration without increasing value



Light Dentin	Medium Dentin	Dark Dentin	Light Enamel	Dark Enamel	Universal	Masking Liner
LD	MD	DD	LE	DE	U	ML
+ Opacity			+ Opacity			
- Chroma			- Chroma			
<p>The range of dentin shades varies in both chroma and opacity, starting with a young and low chroma opaque dentin (Light Dentin), followed by a medium opacity medium chroma dentin (Medium Dentin) and ending with a higher translucent high chromatic dentin (Dark Dentin). Thus following the natural ageing of real dentin.</p>			<p>Enamel shades are naturally opalescent, with a more opaque, high value and low chroma enamel (Light Enamel) and a more transparent, low value and slightly chromatic enamel (Dark Enamel).</p>		<p>Universal is a body shade with incredible shade matching ability for small anterior cavities or single shade restorations in the posterior region.</p>	<p>Masking Liner is an opaque, heavily-filled injectable composite that will block discolouration without increasing value.</p>

* GC R&D Data on file

Simplify your anterior restorations



Before



Palatal shell placement of Essentia Light Enamel (LE) utilising a palatal key technique.



Dentin placement with Essentia Light Dentin (LD).

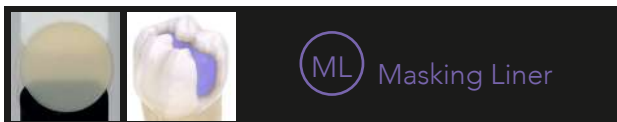


Excellent integration of a class IV restoration on a single central incisor.

Clinical images courtesy of Dr. Yo-han Choi, Australia

The ultimate masking agent

Effectively blocks discolouration^{1,2} without increasing value, creating the base for great aesthetics.



ML Masking Liner



Before



Application of Masking Liner and tooth preparation.

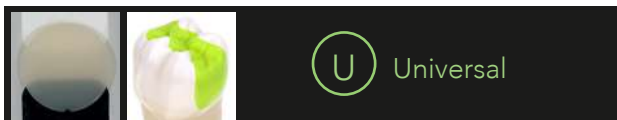


After

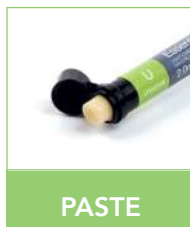
Clinical images courtesy of Dr. Chee Chang, Australia

Essentia Universal Shade – one shade simplicity, with three full-strength viscosities

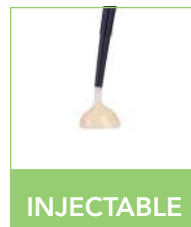
Just one shade, with amazing blendability, lets you create aesthetic restorations with ease.



U Universal



PASTE



INJECTABLE



FLOWABLE



Before



After

Clinical images courtesy of Dr. Clarence Tam, New Zealand

G-ænial A'CHORD

Key advantages

- Simplified unishade system of 5 core shades that achieves the aesthetics of the 16 classic Vita shades with ease
- Excellent handling³, whether sculpting with a hand instrument or using a brush
- Simply universal - offers the combination of aesthetics and strength for both anterior and posterior restorations in one straightforward package
- Creates a beautifully invisible and naturally fluorescent end result under any lighting conditions⁴
- A'CHORD Revolutionary technologies: proprietary filler and coating created by GC; Full-Coverage Silane Coating (FSC) and High Performance Pulverised CERASMART (HPC) resulting in high stain and wear resistance^{5,6} and excellent radiopacity



Simply Universal



Clinical images courtesy of Dr. Anthony Mak, Australia



Clinical images courtesy of Dr. Yo-Han Choi, Australia

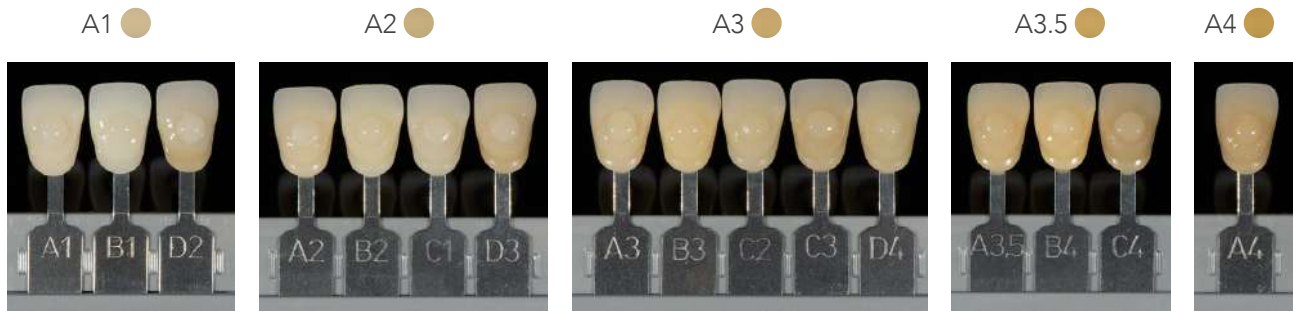
Simplified handling



Images owned by GC

Simplified unishade system

G-ænial A'CHORD always delivers more: a simplified unishade system of 5 core shades that achieves the aesthetics of the 16 classic Vita shades with ease. With this reduced inventory, you will save time and costs. Its unique filler technology mimics natural light reflection resulting in impressive invisible restorations.



Invisible aesthetics even for extreme challenges⁴

In addition to its 5 core shades G-ænial A'CHORD extends its portfolio with 2 cervical shades for elderly patients, 3 opaque for masking discolouration, 2 enamel for life-like translucency and 2 bleach shades for brighter smiles, thus making it possible to create invisible fillings even for extreme challenges.

Composite veneers with simple layering



Pre-operative view. Cracks and chipped incisal edges.



Palatal shelf built using a palatal key in G-ænial A'CHORD shade AE.

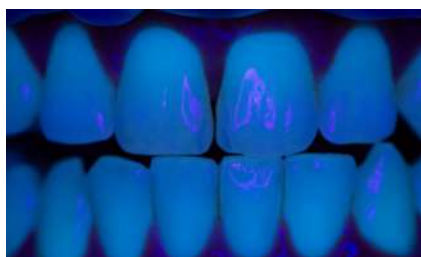


Dentine layer using chromatic G-ænial A'CHORD shade AO2. A thin AE layer was placed as the final layer. Final polishing shows G-ænial A'CHORD's high polishability.

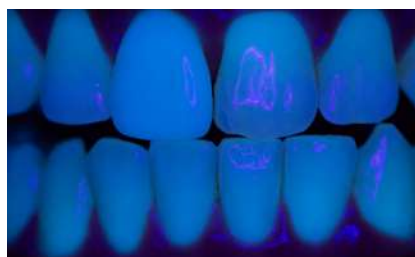
Clinical images courtesy of Dr Po Yang, Brisbane Australia

Natural fluorescence

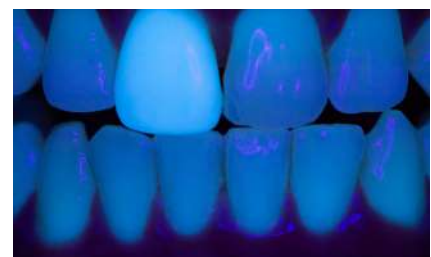
G-ænial A'CHORD creates a beautifully invisible and naturally fluorescent⁴ end result under any lighting conditions, including black light, giving patients a truly confident smile.



Near-UV 405 nm initial situation



G-ænial A'CHORD veneer on tooth 11



Conventional composite veneer on tooth 11

Clinical images courtesy of J. Tapia Guadix, Spain

Long-lasting gloss

G-ænial A'CHORD polishes exceptionally⁷ and retains a high gloss⁸ thanks to its specialised proprietary technology with uniform nano-filler distribution and high filler load.

Time-saving results: The remarkable high gloss achieved with minimal polishing.



G-ænial Anterior & G-ænial Posterior

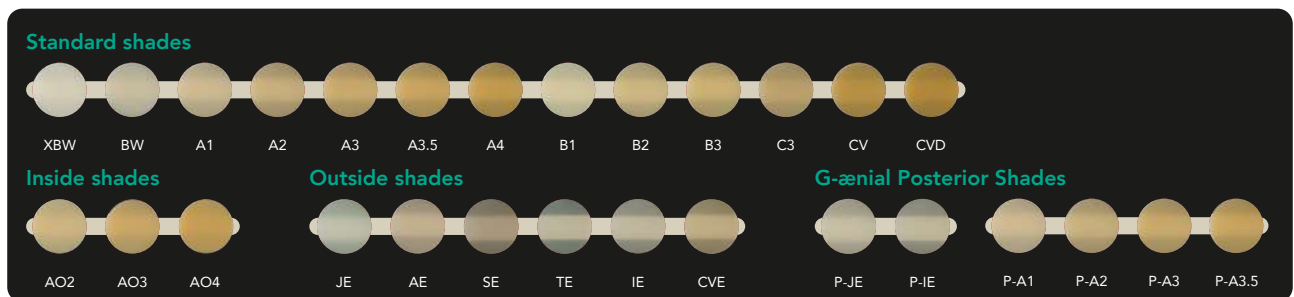
Key advantages

- Excellent handling: Smooth, non-sticky and sculptable handling
- Aesthetics & radiopacity: Beauty and traceability combined
- Versatile in use: From single shade simplicity to multi shade complexity
- More working time: Working time under ambient light extended to 4 minutes
- G-ænial Posterior has simple shade selection: 4 standard shades and 2 enamel shades



Forward-thinking shading concept

G-ænial offers flexibility to the dentist. From aesthetically invisible single-shade to aesthetic masterpieces in a multi-shade build-up. For most cases, the use of standard shades is sufficient to produce beautiful, natural results. G-ænial Anterior offers inside shades which add opacity and eradicate shine through and outside shades which replicate enamel, giving you the best results in cases where multilayering is required.



Outstanding invisible aesthetics

G-ænial is an all round restorative that offers beautiful high-gloss restorations, exceptional natural shade matching for remarkable anterior aesthetics. It gives you total control over your results with the right viscosity for effortless manipulation.



Pre-operative labial view.



After etching the enamel, apply G-Premio Bond.



Achromatic palatal shell made with GC G-ænial Anterior AE using a palatal stent.



Layered build-up using G-ænial Anterior A02 in the cervical 2/3, G-ænial Anterior A3 in the middle 1/3, G-ænial Anterior AE in the incisal 1/3, finished and polished to achieve symmetrical line angles.



Final post-operative labial view.

Clinical images courtesy of Dr. Matthew Wong, Singapore

G-ænial Anterior

A medium consistency that will not stick or slump – it is ideal for free-hand contouring of aesthetic restorations. G-ænial Anterior brings natural vitality and exceptional shade matching for outstanding aesthetic results.



Pre-operative view.



G-ænial Anterior AE was utilised to form the palatal shelf.



G-ænial Anterior A02 was applied next in increments to form the internal structure of dentin.



G-ænial Anterior IE was applied on the incisal third of the tooth. This will enhance light transmission into the tooth.



Final layer of G-ænial Anterior AE was placed, enhanced and sculpted with a brush and defined interproximally.



Post-operative view.

Clinical images courtesy of Dr. Clarence Tam, New Zealand

G-ænial Posterior

A firmer consistency composite, providing a more packable feel with the right amount of flow to ensure complete adaptation to the cavity floor and walls. G-ænial Posterior is easy to sculpt and optimally shaded for aesthetic posterior restorations.



Before



After. G-ænial Universal Flo A3, G-ænial Posterior A2, G-ænial Posterior JE, white effect with XBW.

Clinical images courtesy of Dr. Ayad Mowad Al-Obaidi, Iraq



Before



After

Clinical images courtesy of Dr. Jason Smithson, UK

G-ænial Universal Injectable

High-strength universal injectable composite

Key advantages

- Indicated for all cavity classes (without any covering layer) thanks to its exceptional strength¹⁰ and wear resistance⁹
- No slumping: The material perfectly keeps its shape and has optimal thixotropy
- Easy extrusion and no stringing from the syringe for maximum control and comfort
- Innovative syringe and unitip design offering versatility in delivery
- Bendable dispensing tips for easy access to any cavity
- Long-lasting aesthetics, thanks to its excellent gloss retention and colour stability⁹
- High radiopacity for optimal diagnostic contrast



No stringing, no slump, no stress



Bendable tips for superior cavity adaptation



Easy extrusion for maximum comfort

Inject, shape and contour all at once

Because G-ænial Universal Injectable does not slump or string, you have total control to adapt, shape and contour as you inject for fast, effortless restorations. It will adapt perfectly to the cavity floor and allows you to easily build contours, cusps and even proximal walls.



Clinical images courtesy of Dr Javier Tapia, Spain

Composite build up of a complex Class IV using the Injection Moulding Technique



Before – large class IV fracture on an adolescent patient.



EXACLEAR used to create two transparent injection stents utilising the bilaminar injection technique.



Stent one, opaque layer with A02 G-ænial Universal Injectable, and stent two enamel layer, JE G-ænial Universal Injectable.



Polished final result - Harmonious restoration of a complex class IV restoration using an injectable and 2 shades.

Clinical images courtesy of Dr Anthony Malik, Australia

G-ænial Universal Flo

A full-strength, universal, injectable composite for all cavity classifications

- Impressive aesthetics: Highly aesthetic¹⁴ restorations can be achieved using single shade or layered techniques
- True technology innovation: A new formulation of high translucency strontium glass was developed with an incredibly fine particle size
- Unmatched polish retention: Highest level of aesthetic outcome with exceptional wear resistance^{11,12}



Before



After

Clinical images courtesy of Dr. S Koide, Nagano, Japan



Before



After

Clinical images courtesy of Dr. M Okaguchi, Tokyo, Japan

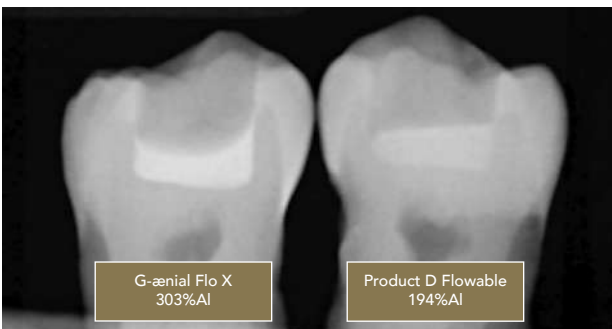
G-ænial Flo X

A full-strength flowable composite for traditional flowable applications

- A flowable with impressive strength:¹³ Gives you a high strength composite in a flowable consistency
- High radiopacity:¹³ Perfect for defining the cavity outline in radiographic images
- Enhanced fluidity: Ideal handling for lining application – gives you total control over the flow



Radiopacity

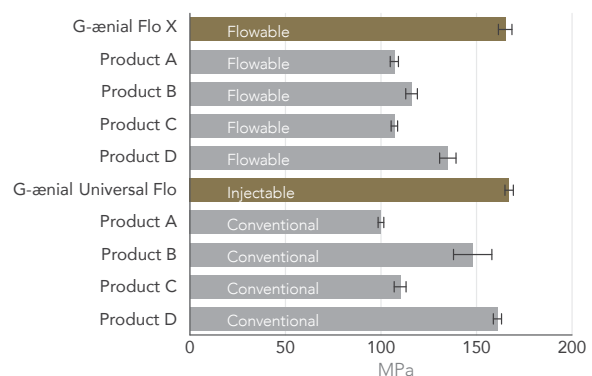


G-ænial Flo X
303%AI

Product D Flowable
194%AI

*GC R&D data on file

Flexural Strength



Date Source: GC R&D

Gradia Direct X

Gives unmatched aesthetic invisibility



Key advantages

- Invisible natural aesthetics thanks to superb chameleon effect
- Clinically proven over more than ten years^{15,16}
- Excellent handling, featuring easy placement and shaping with a long working time
- A simplified shade range allowing the majority of restorations to be completed using a single layer technique
- High radiopacity



Before



After removal of old amalgam restoration, apply bonding agent.



After

Clinical images courtesy of Dr L. Harris, Australia

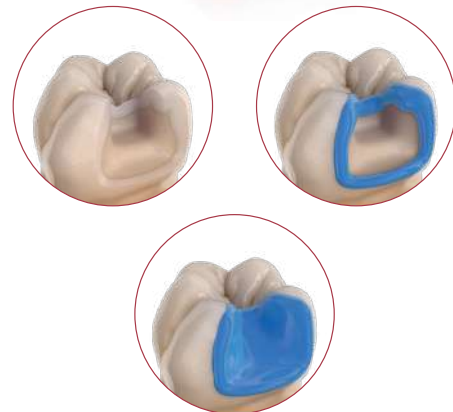
G-Premio BOND

One-component light-cured universal adhesive



Key advantages

- Compatible with all etching techniques (self-etch, selective-etch or total-etch)
- Indicated for direct bonding and repair cases
- Optimal performance on different substrates thanks to 3 functional monomers (4-MET, MDP & MDTP)¹⁷
- Extremely thin film thickness (3µm) to deliver invisible margins
- Virtually no post-operative sensitivity, thanks to its excellent penetration into the dentinal tubules
- Fast and simple application procedure
- Minimal waste thanks to a thin nozzle design delivering up to 300 drops per bottle



Selective etching of the enamel.



Dispensing G-Premio BOND.



Application of G-Premio BOND.



Invisible bonding layer.

Clinical images courtesy of Dr S. Köken, Turkey

G2-BOND Universal

Two-component light-cured universal adhesive

Key advantages

- All round Universal 2-bottle system - compatible with all etching techniques (self-etch, selective-etch or total-etch)
- Indicated for direct bonding, immediate dentin sealing and intra-oral repair cases
- Contains 3 functional monomers (4-MET, MDP & MDTP)¹⁷ for optimal performance on different substrates^{18,19,20,21}
- Virtually no post-operative sensitivity and aesthetic adhesive layer
- Easy dispensing and low technique sensitivity
- Excellent bottle design and thin nozzle delivering up to 300 drops per bottle



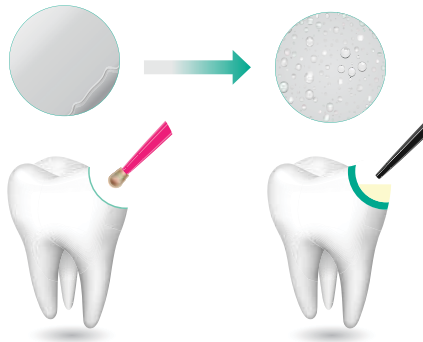
G2-BOND Universal Dual H-Technology

Challenged to improve on existing 2-bottle benchmarks, GC researchers focused on strengthening the adhesive layer and significantly reducing the potential for water degradation over time. The new GC proprietary Dual-H Technology provides a smooth transition from hydrophilic to hydrophobic characteristics in the primed surface, which is then further strengthened by a truly hydrophobic protective bond layer.*

Hydrophilic primer wets and self-etches the tooth surface effectively.

Without hydrophilicity?

- Insufficient resin infiltration to dentin surface
- Higher risk for gap formation



Highly hydrophobic bond layer results in strong bonding to composite.

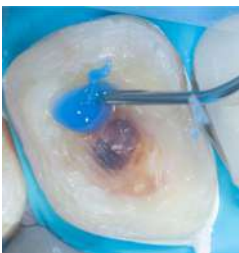
Without hydrophobicity?

- Hydrolytic degradation of bond layer
- Increased risk for debonding

All-round performance of a unique composition

- 4-MET for a reliable adhesion to enamel & dentin
- MDP for an excellent adhesion to enamel & dentin, zirconia, alumina and non-precious metals
- MDTP to bond to precious metals
- HEMA-free bonding system for a clinically proven outstanding durability²²

IDS technique



Etching the tooth structure



Application of 1-PRIMER



Application of 2-BOND



After photopolymerisation, the sealed dentin is ready for digital impression.

Clinical images courtesy of Dr. Jean Meyer, France

*GC R&D data on file

everX Flow

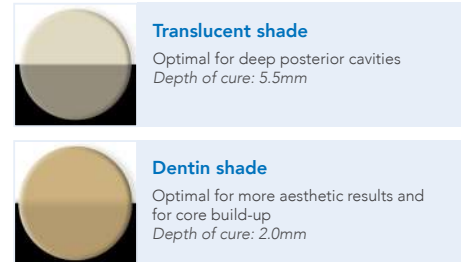
Fibre-reinforced flowable composite – where core strength matters

Key advantages

- Optimal for dentin replacement in large cavities or use as a core under indirect prostheses, thanks to the reinforcing effect of fibres
- Fracture toughness equivalent to dentin and almost double that of other composites²³
- Designed to redirect or arrest crack propagation, thus reducing the risk of catastrophic failures²⁴
- Perfect bond to overlaying composite layer (always required) and to the tooth structure
- Widens the direct restorative options, offering an economic alternative to inlays/onlays



Two shade options for greater flexibility



Cavity preparation.



Application of everX Flow (Translucent shade).



everX Flow is covered with G-aenial Universal Injectable A3.



Post-operative situation.

Clinical images courtesy of Dr Lucile Dahan, France

everX Posterior

Fibre-reinforced composite for dentin replacement

Featuring paste consistency with one universal shade (Translucent).



Preparations for amalgam replacements



Old failing amalgam restoration.



Cavity preparation.



everX Posterior to replace dentin.



Enamel layer with a regular composite.

Clinical images courtesy of Prof Marleen Peumans, Belgium

Modeling Liquid

Liquid to model composite materials for direct restorations

Key advantages

- Low viscosity for ease of use
- Completely invisible after light-curing
- Simple & quick application
- 350 drops per bottle
- Compatible with all direct composites



Simplify your composite work using GC Modeling Liquid with your brush or instruments



Quick & easy application and shaping

Using a brush wetted with GC Modeling Liquid results in a quick and easy application and shaping of composites.



A smooth finish for a shorter finishing procedure

Adapting the final layer of composite using a wetted brush aides in achieving a smoother surface and it simplifies the finishing procedure.



Invisible for the great aesthetic results

GC Modeling Liquid becomes fully transparent after light-curing — giving nice aesthetic results.

Clinical images courtesy of Dr. Javier Tapia Guadix (Spain) & Prof. Mariëen Peumans (Belgium); composite: Essentia (GC)

Apply, shape, smooth, enjoy!



Dispense one drop of GC Modeling Liquid on a pad.



Protect it from the light with a cover.



Touch the drop with the brush or instrument in order to moisten it.



Remove the excess thoroughly using a gauze swab.



Use your instrument or brush to apply the composite.



Use the flat brush to adapt and shape the composite.



Contouring and removal of excess composite using your instrument.



Model the dentin mamelons using a round brush.



Shape and smoothen the final layer of composite using a wetted flat brush or instrument.

Images owned by GC

Scientific References

1. Can we restore the colour of long-term discoloured resin composites by noninvasive methods? *Atalayin Ozkaya C, Yasa B, Demirhan AO, Turkun LS. Colour Res Appl. 2020;1–9.*
2. Comparative Analysis of the Fluorescence of Enamel Shade Resin Composites. *Kornfeld B et al. J Dent Res 2020 Vol 99 (Spec Iss A): 2457* (<https://iadr.abstractarchives.com/abstract/20iags-3327974/comparative-analysis-of-the-fluorescence-of-enamel-shade-resin-composites>)
3. Surface and Handling Characteristics of Universal Restorative Resin Composites. *Säilynoja et al. J Dent Res 2021 Vol 100 (Spec Iss B): 0240.2* (<https://iadr.abstractarchives.com/abstract/ced-iadr2021-3616962/surface-and-handling-characteristics-of-universal-restorative-resin-composites>).
4. MECHANICAL and OPTICAL PROPERTIES of a NEWLY MARKETED UNIVERSAL COMPOSITE RESIN. *Gurgan S, Koç Vural U, Miletic I, J Dent Res 2021 Vol 100 (Spec Iss A): 0554* (<https://iadr.abstractarchives.com/abstract/21iags-3569331/mechanical-and-optical-properties-of-a-newly-marketed-universal-composite-resin>).
5. Color Stability of Recent Resin Composites. *Mizukami, H et al. J Dent Res 2021 Vol 100 (Spec Iss A): 2279* (<https://iadr.abstractarchives.com/abstract/21iags-3570195/color-stability-of-recent-resin-composites>)
6. Esthetic and Mechanical Durability of Direct-Filling Resin Composite. *Jin S, Machida D, Fusejima, F J Dent Res 2022 Vol 101 (Spec Iss C): 0367* <https://iadr.abstractarchives.com/abstract/51am-3664407/esthetic-and-mechanical-durability-of-direct-filling-resin-composite>
7. Evaluation of Gloss Retention of Resin Composite After Toothbrush Wear Test. *Jin S, Fusejima F, J Dent Res 2021 Vol 100 (Spec Iss B): 0231* (<https://iadr.abstractarchives.com/abstract/ced-iadr2021-3597501/evaluation-of-gloss-retention-of-resin-composite-after-toothbrush-wear-test>)
8. *Molina GF, Mazzola I, Carranza AC, Cabral RJ. 2021. 99th General Session & Exhibition of the IADR. J Dent Res 100 (Spec IssA): abstract number 0550 Surface Gloss and Gloss Retention of Two Nano-Filled Universal Composites IADR Abstract Archives*
9. *Chen et al (2022). Flexural and Wear Properties of Injectable Resin Composites. J Dent Res 101(B): 0376* <https://iadr.abstractarchives.com/abstract/22iags-3723319/flexural-and-wear-properties-of-injectable-resin-composites>
10. *Corsentino G, Ferrari M (2020). Clinical Report of Class II Restorations Made Using an Injectable Resin Composite. J Dent Res 99 (A):1383.* <https://iadr.abstractarchives.com/abstract/20iags-3322298/clinical-report-of-class-ii-restorations-made-using-an-injectable-resin-composite>
11. Comparison of the wear and flexural characteristics of flowable resin composites for posterior lesions. *N. Sumino, K. Tsubota, T. Takamizawa, K. Shiratsuchi, M. Miyazaki, M.A. Latta. Acta Odontologica Scandinavica, 2013; 71: 820–827*
12. Polish Retention of a Nanohybrid Flowable Composite. *J.A. Platt, M. Macpherson and B. Rhodes. Abstract 1175 – IADR 2011*
13. Property of new flowable composite resin with high radiopacity. *H. Tanaka, T. Ueno, A. Arita, T. Kumagai (GC CORPORATION). Poster P-18, IADR Dubrovnik, 2014* <https://iadr.abstractarchives.com/abstract/anz14-193579/property-of-new-flowable-composite-resin-with-high-radiopacity>
14. The effect of polishing protocol on surface gloss of different restorative resin composites. *L. Lassila, E. Säilynoja, R. Prinsi, P.K. Vallittu, S. Garoushi. Biomaterial Investigations in Dentistry 2020, Vol. 7, n°1, 1-8.* <https://doi.org/10.1080/26415275.2019.1708201>
15. Palaniappan S, Elsen L, Lijnen I, Peumans M, Van Meerbeek B, Lambrechts P. Three-year randomised clinical trial to evaluate the clinical performance, quantitative and qualitative wear patterns of hybrid composite restorations. *Clin Oral Investig. 2010 Aug;14(4):441-58. doi: 10.1007/s00784-009-0313-1. Epub 2009 Aug 8. PMID: 19669176; PMCID: PMC2908443.*
16. Long term clinical performance as evidenced by over 100 publications.
17. Clinical effectiveness of contemporary adhesives for the restoration of non carious cervical lesions. A systematic review. *M. Peumans, J. De Munck, A. Mine, B. Van Meerbeek. Dental Materials 30 (2014) 1089-1103*
18. *Minamisawa H, Hirano K, Fusejima F. 2022. AADOCR/CADR Annual Meeting. Presentation ID: 0986. Evaluation of Bond Strength of Multi-Step Adhesives Under Moist Condition IADR Abstract Archives*
19. *Higashi S, Shoji T, Hirano K, Fusejima F. 2022. 100th General Session & Exhibition of the IADR. J Dent Res 101 (Spec IssB):1353.* <https://iadr.abstractarchives.com/abstract/22iags-3719661/evaluation-of-bonding-layer-durability-of-hema-free-2-step-self-etch-adhesive>
20. *Yamashita M, Hirano K, Fusejima F. 2021. CED-IADR/NOF Oral Health Research Congress. J Dent Res 100 (Spec IssB): abstract number 0196.* https://ced-iadr2021.com/wp-content/uploads/2021/09/Abstract-book_2021-9-20_Adjusted-version.pdf#p.96
21. *Suyama Y, Mizukami H, Yamada T, Sugizaki J. 2021. 99th General Session & Exhibition of the IADR. J Dent Res 100 (Spec IssA): abstract number 0730. Bonding Effectiveness of the Multi-Step Self-Etching Adhesive to Dentin IADR Abstract Archives*
22. *Van Dijken J, et al, Dent Mater. (2013).*
23. *Garoushi S, Gargoum A, Vallittu P, Lassila L Short fibre-reinforced composite restorations: A review of the current literature. Dental Biomaterials 2018*
24. *Alvanforoush N, Palamara J, Wong RH, Burrow MF. Comparison between published clinical success of direct resin composite restorations in vital posterior teeth in 1995-2005 and 2006-2016 periods. Aust Dent J 2017 Jun; 62(2):132-145. doi: 10.1111/adj.12487. Epub 2017 Apr 1*



Essentia

Syringe Refill

2mL syringe refill in shade: LD, MD, DD, LE, DE, U, OM
 2mL syringe refill ML with 20x dispensing tip
 2.4mL syringe refill modifier shade: RBM, BM, WM
 1x syringe 3.4g (2.0mL) Essentia LoFlo, 20x dispensing tip
 1x syringe 3.6g (2.0mL) Essentia HiFlo, 20x dispensing tip

Unitips Refill

15x unitips (0.16mL each) in shade: LD, MD, DD, LE, DE, U



G-aenial Universal Injectable

1 Syringe Pack

1x syringe 1.7g (1.0mL), 5x dispensing tip needle,
 5x dispensing tip long needle, 1x light-protective cap

Dispensing Tip Refill

20x dispensing tip long needle
 20x dispensing tip regular needle

2 Syringe Pack (available in shades A1, A2, A3)

2x syringe 1.7g (1.0mL), 10x dispensing tip needle,
 10x dispensing tip long needle

Shades

XBW, BW, A1, A2, A3, A3.5, A4, B1, B2, CV, CVD, AO1,
 AO2, AO3, JE, AE

Also available in Unitips: 15 x Unitips 0.27 g (0.16 mL)
 in shades: A1, A2, A3, A02, BW



Gradia Direct X (Anterior/Posterior)

Syringe and Unitips

Available in both 5g (2.7ml) syringe and 5x 0.3g
 (0.16ml) unitips

Standard: X-A1, X-A2, X-A3, X-A3.5, X-BW, X-B1,
 X-B2, X-C2

Inside shade: X-AO2 Outside shade: X-WT



everX Flow

Syringe

1x everX Flow, syringe 2 mL (3.7g) – Dentin shade
 1x everX Flow, syringe 2 mL (3.7g) – Bulk shade (Translucent)

Dispensing Tip

20x dispensing tip



G-aenial A'CHORD

G-aenial A'CHORD Layering Syringe Kit
 5x syringe, 1 of each shade: A2, A3, AO2, AE, JE

G-aenial A'CHORD Layering Unitip Kit
 15x unitips per shade: A2, A3, AO2, AE, JE

G-aenial A'CHORD Universal Trial Syringe Kit
 3x syringe, shade: A2x 2; A3x 1

G-aenial A'CHORD Universal Trial Unitip Kit
 15x unitips, shade: A2x 2; A3x 1

G-aenial A'CHORD Universal Bleach Syringe Kit
 3x syringe, 1 of each shade: BW, BOW, JE

Syringe Refill

Content per syringe: 2.1mL (4g)
 Standard: A1, A2, A3, A3.5, A4, A5, A6
 Opaque: AO1, AO2, AO3
 Enamel: JE, AE
 Bleach: BW, BOW

Unitips Refill

Content per unitip: 0.16mL (0.3g)
 15x unitips of: A1, A2, A3, A3.5, A4, A5, A6, AO1, AO2,
 AO3, JE, AE, BW, BOW



G-aenial Universal Flo

1 Syringe Pack

1x syringe 3.4g (2.0mL), 20x dispensing tips

Dispensing Tip Refill

30x dispensing tip III plastic
 30x dispensing tip III metal

Shades

A1, A2, A3, A3.5, A4, BW, B1, B2, B3, C3, CV
 Inside (Opaque): AO2, AO3
 Outside (Enamel): AE, JE



G-Premio BOND

1-bottle Pack

1x 5mL bottle

3-bottle Pack

3x 5mL bottles

Unit Dose

50x 0.1 mL unit dose
 50x disposable applicator, fine



everX Posterior™

Unitips

15x unitips (0.13mL, 0.25g each) –
 Universal shade (Translucent)

Modeling Liquid

1-bottle Pack

1x 6mL refill



G-aenial Anterior

Syringe

Content per syringe: 2.7ml (4.7g)
 Standard: XBW, BW, A1, A2, A3, A3.5, A4, B1, B2, B3,
 C3, CV, CVD
 Inside special: AO2, AO3, AO4
 Outside special: JE, AE, SE, IE, TE, CVE

Unitips

Content per unitip: 0.16mL (0.28g)
 20x unitips of: A1, A2, A3, A3.5, AO3, CV, AE, IE
 10x unitips of: XBW, BW, A4, B1, B2, B3, C3, CVD,
 AO2, AO4, JE, TE, SE, CVE



G-aenial Posterior

Syringe

Content per syringe: 2.7ml (5.5g)
 Standard: P-A1, P-A2, P-A3, P-A3.5
 Outside special: P-JE, P-IE

Unitips

Content per unitip: 0.16mL (0.33g)
 20x unitips of: P-A1, P-A2, P-A3, P-A3.5, P-JE, P-IE



G-aenial Flo X

1 Syringe Pack

3.6g (2.0ml) syringe, 20x dispensing tips

Dispensing Tip Refill

30x dispensing tip III plastic
 30x dispensing tip III metal

Shades

A1, A2, A3
 Opaque: AO2



G2-BOND Universal

Universal 2-bottle bonding system

1x 1-PRIMER 5mL

1x 2-BOND 5mL

accessories

G2-BOND Universal 1-PRIMER Refill

1x 1-PRIMER 5mL

G2-BOND Universal 2-BOND Refill

1x 2-BOND 5mL



Composite Manipulation Brush

Available In Packs

2x brush handles
 10x brush tips flat
 10x brush tips round

THESE PRODUCTS ARE NOT AVAILABLE FOR PURCHASE BY THE GENERAL PUBLIC. ALWAYS READ AND FOLLOW THE DIRECTIONS FOR USE.



Since 1921
 Towards Century of Health

GC Australasia Dental Pty Ltd
 1753 Botany Road Banksmeadow
 NSW 2019 Australia

T: +61 2 9301 8200
 E: info.australasia@gc.dental
 www.gcaustralasia.com