

Advanced CBCT Techniques

for Dental Diagnostics and Treatment Planning



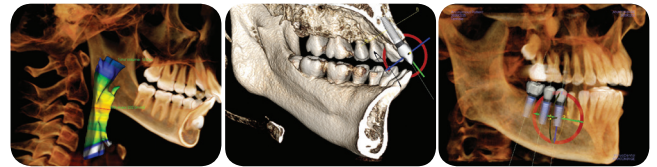
Cone Beam CT technology is constantly advancing, with new functions, including low dose modes, becoming available on many CBCT machines. New technologies offer unique ways to utilise CBCT in dental practice, to ensure you have optimal diagnostic information no matter what the clinical indication. We will explore the latest CBCT technologies, including discussing the potential uses for low dose CBCT scanning. The capabilities and limitations of specific CBCT machines will also be explored.

A detailed discussion about protocol selection and patient positioning will include tips gained from over 10 years of CBCT scanning experience. Finally, the broad range of dental and non-dental pathology that may be encountered will be reviewed, with a selection of interesting cases showcasing how advanced dental diagnostics using CBCT can enhance patient outcomes.



Course Topics

- Update on CBCT technology
- Capabilities and limitations of current CBCT machines
- Protocol design to suit specific machines
- Patient positioning for optimal image quality
- Dental pathology review



Presented by Dr Raahib Dudhia BSc Hons 1, D.Clin.Dent. (Dento-maxillofacial Radiology)

Dr Raahib Dudhia completed his training in Dento-maxillofacial Radiology at The University of Queensland and has extensive experience in private radiology practices in Queensland and NSW, reporting conventional dental radiographs as well as CBCT, CT and MRI scans. Raahib has also teaches dental imaging to undergraduate and post-graduate students as well as dental assistants and radiographers. Recently, he has started an online Dental Radiology Consultancy, assisting practitioners with reporting and protocol advice, as well as providing a second opinion on scans taken in medical imaging practices.

Raahib has had access to CBCT since the early days, and has seen the maturation of CBCT technology into a highly valuable diagnostic tool in dentistry and medicine. A bit of a tech lover, he likes to keep up to date with new machines and CBCT viewers as they become available.

Melbourne Saturday 25th August 2018
Time: 9.00am – 1.00pm
Venue: Henry Schein Halas, Level 9, 369 Royal Parade, Parkville VIC 3052
Cost: \$295

Sydney Saturday 20th October 2018
Time: 9.00am – 1.00pm
Venue: Henry Schein Halas, Building 3, Level 6, 189 O’Riordan Street, Mascot, Sydney, 2020
Cost: \$295



Register online: www.henryschein.com.au/education

Registration enquiries: 1300 302 421 events@henryschein.com.au