



Extraction & Bone Grafting Strategies & Techniques

10% off when you enrol to both course 1 & 2

(2017 only T&Cs apply)

2 ADVANCED BONE GRAFTING- BLOCKS & SINUSES

Didactic and Hands-on Course using Sheep & Pig jaws

SYDNEY- Sun 15th Oct 17
MELBOURNE- Sun 26th Nov 17

8am Rego for 8:30am Start, 5pm Finish

7.5 CPD Hours

1 ATRAUMATIC EXOS & SOCKET REGENERATION

Didactic and Hands-on Course using Pig jaws

SYDNEY- Sun 10th Sept 17
MELBOURNE- Sat 25th Nov 17

8am Rego for 8:30am Start, 5pm Finish

7.5 CPD Hours



Extraction & Bone Grafting Strategies & Techniques

Presented by A/Professor Max Guazzato

\$1500 Early bird
\$1650 Standard
7.5 CPD hrs

1

ATRAUMATIC EXOS & SOCKET REGENERATION

SYDNEY- Sun 10th Sept 17
ADA-CPD 1 Atchison St St Leonards

MELBOURNE- Sat 25th Nov 17
Level 9, 369 Royal Parade Parkville

8am Rego for 8:30am Start, 5pm Finish

The extraction of a tooth is unquestionably accompanied with the loss of alveolar bone volume. For some patients the loss of bone volume will compromise the possibility for successful dental implant rehabilitation. In other situations it may mean an alteration of the emergence profile and an aesthetic and functional compromise.

Teeth extractions can be challenging in numerous situations including posterior teeth with divergent roots, teeth adjacent to vital structures, teeth with existing pathology or fractured and retained roots. An atraumatic tooth extraction protocol which is consistent, reproducible and ergonomic and will be discussed to reduce trauma and predictably remove teeth.

Post-extraction socket grafting techniques have been controversial and unpredictable due to the varying techniques and grafting materials available. This course will discuss an immediate socket regeneration technique that has given predictable results in private practice for 10 years.

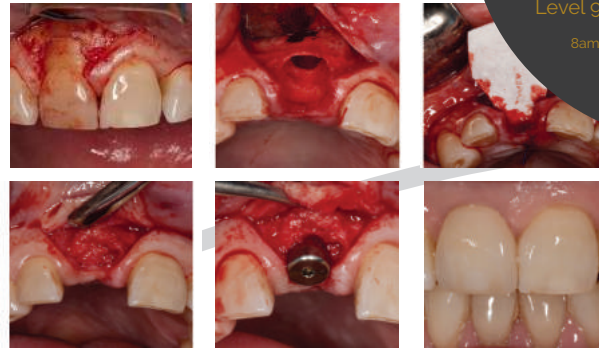
Didactic component:

- An atraumatic extraction technique and why this technique?
- Use of handpieces, osseosets, piezo surgery and instruments for teeth extraction
- Selection of bone grafting materials - autologous, xenograft, alloplastic & allograft materials
- Membranes & how to handle membranes
- Flap design, suture types and suturing techniques

Hands-on component:

Using pig's jaws, participants will focus on an atraumatic extraction technique and immediate socket regeneration.

- An atraumatic extraction technique
- Immediate socket grafting
- Suturing, manipulation of collagen membranes & use of tacs



2

ADVANCED BONE GRAFTING- BLOCKS & SINUSES

SYDNEY- Sun 15th Oct 17
ADA-CPD 1 Atchison St St Leonards

MELBOURNE- Sun 26th Nov 17
Level 9, 369 Royal Parade Parkville

8am Rego for 8:30am Start, 5pm Finish

\$1500 Early bird
\$1650 Standard
7.5 CPD hrs

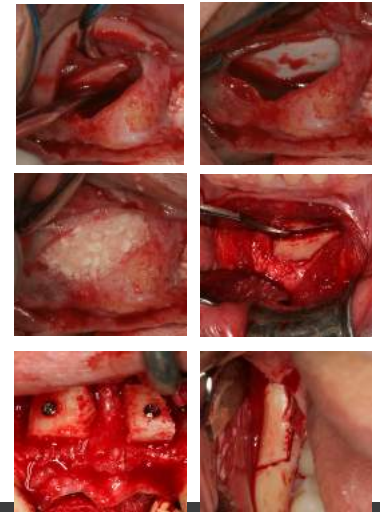
Block bone grafting & sinus lifting are the most common treatment options used in situations of severe loss of alveolar bone for dental implant treatment. It is important to understand the treatment options available to the patient when it comes to bone grafting procedures. Block bone grafting and sinus lifting are complex regenerative procedures for very experienced clinicians and specialists. This course will give you hands-on, in depth knowledge of these treatment options and risk analysis. It will give you a thorough platform for skill development and is recommended that you have completed Course 1 Atraumatic Exos & Socket Regeneration prior. Please be aware that complex procedures should always be performed on patients after numerous pre-clinical simulations and then under strict supervision & mentorship of an experienced clinician.

Didactic component:

- Anatomy of the maxillary sinus for the purpose of lateral & transcrestal sinus grafts
- Anatomy of the chin & ramus for bone block harvesting purposes
- Diagnosis of pathology in the sinus and when to refer to ENT physician
- CBCT scan analysis, risk assessment, treatment planning and treatment sequence
- Donor sites- ramus, chin, bone substitutes
- Use of Piezo surgery and specific instrumentation for complex grafting procedures
- Flap designs & layered suturing techniques
- Patient post operative care
- Patient cases with history, assessment, treatment options, step-by-step treatment

Hands-on Component:

- Using pig jaws participants will prepare the harvest site & harvest a block of bone
- Prepare the donor site to fit the harvested bone
- Using a sheep maxilla participants will simulate a lateral sinus lift procedure
- Use piezo surgery, fixation screws, collagen membranes, membrane tacs, chisels, mallets
- Use of particulate bone around the site
- Complex flap designs, relieving incisions for tension free closure and suturing techniques



Combine 1+2

\$2700 Early bird
\$2970 Standard
15 CPD hrs

This course adheres to AHPRA guidelines of clinically & scientifically based Continuing Education

To Register:

- Online:** Fill out the online form and pay via credit card at: www.highlandspd.com.au/enrol
 - Cheques:** to Highlands Professional Development Shop 2/27 Harvey St PYRMONT NSW 2009
 - EFT Transfer:** Highlands Professional Development BSB: 032 056 Acct No: 479061 email: info@highlandspd.com.au
- Early bird ends 6 weeks prior to course commencement

Program supported by:



Cancellations accepted in writing up to 21 days prior to the seminar. Highlands Professional Development reserves the right to cancel the seminar at any time with the sole liability to fully refund all registration fees.

Presented by:

A/Professor Max Guazzato

Prosthodontist, A/Prof of Oral Rehabilitation, University of Sydney
DDS (Hons 1), PhD, DCLinDent (Pros), FRACDS, MRACDS, FPPA, FICD, DT



Associate Professor Max Guazzato finished Dentistry and a postgraduate residency in Oral Surgery at the University of Milan. Prior to this Max completed a 5-year full-time Dental Technician diploma at Milan Technology College. After over a decade in private practice, running a day hospital and University lecturing Max relocated to complete a PhD at Sydney University in the field of Zirconia and dental ceramics. Max completed his DCLinDent (Pros) degree at Sydney University and is registered as a specialist Prosthodontist. Max has over 30 international peer-reviewed scientific publications & has co-authored 3 books. Max has a dental fellowship by examination and is a prosthodontics special field member of the Royal Australasian College of Dental Surgeons. He is passionate about combining private practice with University teaching, research and continuing education. Max operates from private practice in Pyrmont and Bowral in NSW. The majority of his time in referral-based private practice is dedicated to dental implantology and complex restorative. Visit us at highlandspd.com.au & pyrmontdentalspecialist.com.au & highlandsdentalspecialists.com.au

All our programs proudly support local and international charities

Highlands Professional Development is proud to support local and international charities with a percentage of income generated from education courses such as this one.