

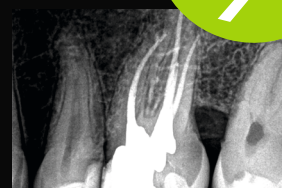
COLTENE ENDO

CPD
HOURS
7

REACHING THE NEW STANDARDS OF MODERN ENDODONTICS

AN EVIDENCE-BASED THEORETICAL AND CLINICAL PROGRAM

Presented by Dr. Oliver Pope



Do you want to use the most modern techniques and materials? Do you want to treat teeth that last longer? This course is designed to give the skilled general practitioner the knowledge, materials and techniques to complete endodontic treatment to the highest possible standard.

Course Topics

- Identifying the right tooth. Complex diagnostic scenarios: cracked teeth and myofascial pain.
- An introduction to the new concept of “Minimally Invasive Endodontics” and an evidence-based evaluation of the risks and benefits of MIE. Techniques to employ in practice to extend the life of endodontically treated teeth.
- An Australian first: exposure to the latest advances in NiTi technology - beyond heat-treated NiTi. A look at the advances in nickel titanium instrumentation with a focus on the latest advance in NiTi technology – beyond heat treated NiTi.
- Learn to customise canal preparation specific to canal morphologies – one size and technique does not fit all – take your knowledge to the next level. Do you fracture instruments? Negotiate complex anatomy the way endodontists can: ledges, aggressive curvatures, S-bends whilst minimising the risks of fractures. Practical session with EDM NiTi files.
- A look at the major tooth-threatening iatrogenic errors: fractured instruments and perforations and preventing such mistakes. A focus on communication with the patient when complications occur. Understanding when those complications will be disastrous to outcome and when they will not.
- Advances in obturation techniques and new sealer technology. Practical session.
- What is the “new” ideal standard of care and what can general dental practitioners do to achieve it?
- Restoration of root-filled teeth. Are crowns always necessary? A look at recent literature about the use of posts in rootfilled teeth and to assist in selecting the appropriate type of post.
- A microscope will be available for participants to use during the session.
- *Participants are asked to bring extracted teeth with access cavities prepared and loupes.*

Learning Objectives

- Understanding the limitations and advantages minimally invasive endodontics and implementing “orifice directed access” in your practice
- Utilise the latest NiTi technology to achieve specific canal-appropriate instrumentation with reduced risk of iatrogenic errors
- Ability to obturate with modern techniques and sealers
- Advanced knowledge of conservative restoration of root-filled teeth

This program will be limited to a small group to ensure open communication throughout the course and a personalised experience for participants.

PRESENTER

Dr. Oliver Pope, BDS (Hons), DCD (Endo)



Dr Oliver Pope graduated from the University of Queensland in 2006 and was awarded a Bachelor of Dental Science with First Class Honours. After multiple overseas deployments as a Dental Officer in the Royal Australian Navy and several years of general dental practice, he commenced a Doctorate of Clinical Dentistry in Endodontics. He completed his Doctorate at the University of Melbourne and was awarded the inaugural Ephraim Ehrmann Prize in Endodontics for best overall performance in the degree. Oliver's research into the clinical applications of Cone-Beam Computed Tomography has been published in the Journal of Endodontics.

Oliver is passionate about teaching and educates both overseas-trained and local dentists in addition to teaching positions at the University of Melbourne and La Trobe University. Oliver regularly lectures locally and overseas. Oliver is a member of the Australian Dental Association, Australian Society of Endodontics and the Australian and New Zealand Academy of Endodontists.

COURSE DATE AND REGISTRATION DETAILS

MELBOURNE

Friday, 8th September 2017

THE DENTAL SOLUTIONS AUSTRALIA

L1, 233 Collins St. Melbourne Vic 3000

Start Time 09.00

End Time 17.00

COST

Single Delegate \$ 650 incl. GST

REGISTRATION ONLINE

www.henryschein.com.au/education

REGISTRATION ENQUIRIES

1300 302 421

events@henryschein.com.au