

GC Luting Guide

A solution for every
luting challenge



Since 1921
100 years of Quality in Dental

How to choose the optimal luting cement?

Today more than ever you are spoiled for choice when planning and delivering indirect restorations. From the moment your patient comes in, you have much to consider before deciding on the treatment plan.

As a dentist, you know that no two patients are alike and it is, therefore, important to follow a holistic approach in treatment planning considering the choice of indirect restoration and type of preparation that is best suited to the patient's clinical situation.

An important part of this process is choosing the right luting cement



The key questions you should ask before making the final choice are:
Which is the optimal luting cement to help me



The selection of the optimal luting cement is vital to achieve an excellent result and long-term patient satisfaction.

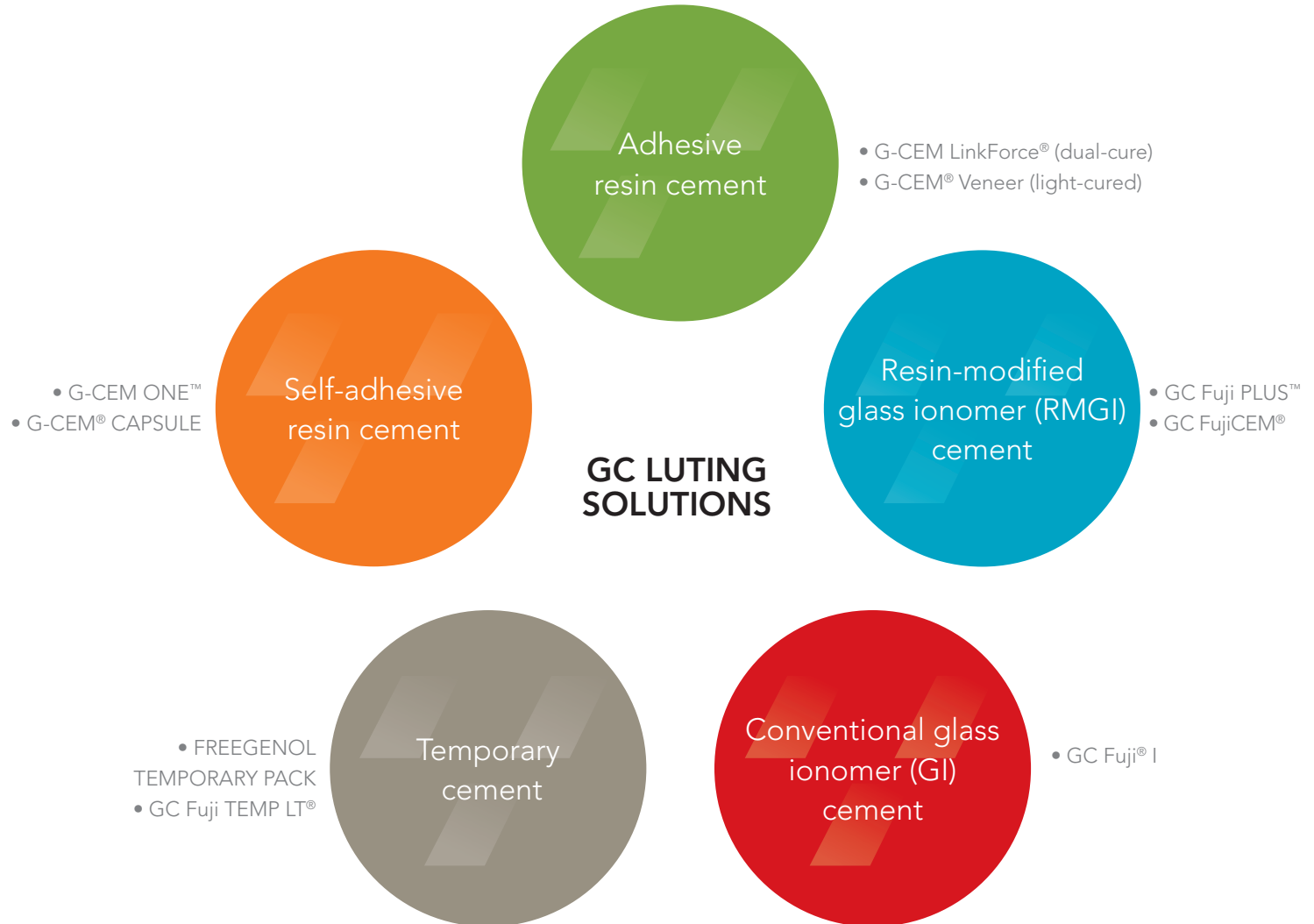


Discover GC's luting solutions for all your luting challenges

With 100 years of experience and one of the most comprehensive product portfolios, we at GC believe we are the ideal partner to guide you towards the most appropriate luting solution.

Because after all, efficient luting is a team effort.

Each of the GC luting solutions is suited to different clinical situations and offers you their unique features like physical properties, working time, the protocol of use, and cost...



Depending on the clinical situation, the first question you should ask yourself is: Should I CEMENT or BOND?

When to cement?

Cementation is typically used when your preparations allow mechanical retention.

The following clinical aspects will define your choice for the optimal CEMENTATION procedure:

Retentive preparation



Select **GI** & **RMGI** cement that offers the best balance of ease of use, speed and tooth protection.

Isolation not possible



Select **GI** or **RMGI** cement as they offer moisture tolerance with excellent chemical adhesion to the tooth.

Moderate aesthetics needed



Select **GI** or **RMGI** cement when your clinical situation and/or selected substrate (zirconia, metal & porcelain fused to metal) does not require a very high aesthetic cement.

Patients with special needs



Select **GI** or **RMGI** cement for high caries risk and geriatric patients.

Your options

Conventional glass ionomer (GI) cement | GC's solution: **GC Fuji I**

Resin-modified glass ionomer (RMGI) cement | GC's solutions: **GC Fuji PLUS**, **GC FujiCEM**

Source: Dr Lucile Dahan, France (1) and Prof Jean-François Lasserre, France (2, 3 and 4)

When to bond?

Bonding is typically used when extra adhesion is required or when aesthetics are of the utmost importance.

Preparation is not retentive



Select **adhesive resin cement** or **self-adhesive cement with tooth primer** when the preparation is not retentive.

Self-adhesive cement alone (ease of use) can be used for moderate retentive preparations.

Isolation possible



Select **self-adhesive** or **adhesive resin cement** when a dry working field can be assured.

High aesthetics needed



Select **self-adhesive** or **adhesive resin cement** for highly aesthetic outcomes.

Extra adhesion needed



Select **adhesive resin cement** or **self-adhesive cement with tooth primer** for bonding veneers and hybrid ceramics (e.g. CERASMART270).

Your options

Self-adhesive resin cement | GC's solutions: **G-CEM ONE** and **G-CEM CAPSULE**

Self-adhesive resin cement with tooth primer | GC's solution: **G-CEM ONE** with **G-CEM ONE Adhesive Enhancing Primer**

Adhesive resin cement | GC's solutions: **G-CEM LinkForce** (dual-cure) and **G-CEM Veneer** (light-cured)

Source: Prof Jean-François Lasserre, France (1, 2 and 3)

Discover all of our luting solutions!

With one of the most comprehensive luting portfolios, we at GC can help you maintain your patient's smile.

Permanent cementation

Glass ionomer based types of cement



GC Fuji I

Page 7

Conventional glass ionomer (GI) cement

- Affordable solution
- Resin-free cement



GC Fuji PLUS & FujiCEM

Page 8

Resin-modified glass ionomer (RMGI) cement

- Long-term clinical success[^]
- Predictable cement
- Easy-to-use
- Versatile
- High bond to zirconia

Temporary cementation

Zinc oxide cement



FREEGENOL TEMPORARY PACK

Page 13

Glass ionomer provisional luting cement



GC Fuji TEMP LT

Page 13

Permanent cementation

Composite resin-based types of cement



G-CEM CAPSULE

Page 9

Self-adhesive resin cement

- Easy-to-use
- Simple



G-CEM ONE

Page 10

Self-adhesive resin cement

- Efficient self-curing mode^{*}
- Easy-to-use



G-CEM LinkForce (dual-cure)

Page 11

Adhesive resin cement

- High adhesion
- High aesthetics



G-CEM Veneer (light-cured)

Page 12

Adhesive resin cement for restorations lower than 2 mm thick

- High aesthetics
- Easy placement

[^] van Dijken JW, Ormin A, Olofsson AL (1999). Clinical performance of pressed ceramic inlays luted with resin-modified glass ionomer and auto-polymerizing resin composite cements. J Prosthet Dent.82(5):529-35.

^{*} Sato K, Arita A, Kumagai T (2019). Evaluation of Bonding Properties of Resin Cement in Self-cure Mode. J Dent Res (Spec Iss 98 A):1884 (<https://iadr.abstractarchives.com/abstract/19iags-3163131/evaluation-of-bonding-properties-of-resin-cement-in-self-cure-mode>)

GC Fuji I

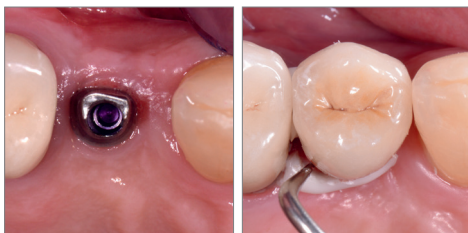
Conventional Glass Ionomer Cement



Affordable solution



Resin-free cement for patients allergic to methacrylate (resin)



A good solution for cementation on implant abutments. Easy removal of excesses considerably reduces the risk of peri-implantitis.

Clinical images courtesy of Dr Emmanuel d'Incau, France

The resin-free luting solution.

GC Fuji I, GC's first luting GI cement, is still the material of choice and widely used across the world.

Key clinical advantages

- **Chemical adhesion to the tooth** structure, ensuring an excellent **marginal seal**
- **Moisture-tolerant solution** when a dry field cannot be assured
- **Quick and easy** without the need for etching and bonding of the tooth
- **Resin-free cement** for patients allergic to methacrylate (resin)
- **Virtually no post-operative sensitivity:** a pulp friendly solution

Practical advantages

- **Affordable** and **easy-to-use** solution for metal-based-restorations
- Economic consideration: \$\$\$\$

Shade range

- Powder/Liquid: Light yellow
- Capsules: Light yellow

Clinical applications

	Metal / PFM	Zirconia / Alumina
Inlays / onlays	●	N.A.
Crowns / bridges	●	●
Posts/ inlay cores	●	-

GC Fuji PLUS & FujiCEM

Resin-Modified Glass Ionomer Cement



Easy removal of excess

Predictable and reliable solution

Clinical images courtesy of Dr Emmanuel d'Incau, France

Efficient and proven over 20 years - a predictable, reliable solution.[^]

GC Fuji PLUS is one of the most well-known products and it is considered a benchmark material in its class, offering the tooth protection of a glass ionomer cement balanced with the strength of a resin cement. GC FujiCEM is the first resin-modified glass ionomer luting cement in a paste formulation. Together with its unique dispenser, GC FujiCEM paste forms a complete luting system that simplifies the current technique, saves time during the procedure, and helps ensure an excellent result.

Key clinical advantages

- **Chemical adhesion to the tooth** structure, ensuring an excellent marginal seal
- **Moisture-tolerant solution** when a dry field cannot be assured
- **Quick and easy:** no need for etching and bonding of the tooth
- Rubbery consistency for **easy removal of excess**
- Virtually **no post-operative sensitivity:** a pulp friendly solution

Practical advantages

- **Proven and predictable performance** for most routine cases
- Also available in extended working time (EWT) version for long-span bridges
- Economic consideration: \$\$\$\$

Shade range

- GC Fuji Plus Powder/Liquid: Yellow
- GC Fuji Plus Capsules: Yellow
- GC FujiCEM Cartridge: Yellow

Clinical applications

	Metal / PFM	Feldspathic / leucite ceramics*	Lithium Disilicate (e.g. GC Initial LiSi Press)	Zirconia / Alumina	Composite / Fibre-reinforced resin
Inlays / onlays	●	● (inlays)	●	N.A.	●
Crowns / bridges	●	-	●	●	●
Posts/ inlay cores	●	N.A.	N.A.	●	●

* Feldspathic & leucite-reinforced ceramics

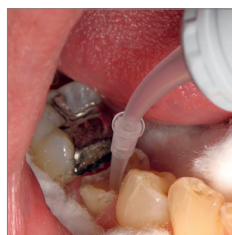
[^] van Dijken JW, Ormin A, Olofsson AL (1999). Clinical performance of pressed ceramic inlays luted with resin-modified glass ionomer and auto-polymerizing resin composite cements. J Prosthet Dent.82(5):529-35.

G-CEM CAPSULE

Self-adhesive resin cement



A post space has been prepared. G-BOND was applied to all tooth surfaces. NB: The patient could not tolerate the rubber dam.



G-CEM was then injected to the base of the post space using a capsule elongation tip that was clipped onto the G-CEM capsule.



The post was inserted, G-CEM polymerised and G-aenial Posterior composite was incrementally placed to form a composite core.

Clinical images courtesy of Dr Graeme Millich, New Zealand

Simplicity is innovation!

G-CEM CAPSULE is a self-adhesive cement in a capsule delivery. G-CEM CAPSULE is easy-to-use and a versatile luting cement that is a perfect partner for most of your routine cementation.

Key clinical advantages

- **Universal** application, G-CEM will cement a wide range of indirect restorations
- **High bond strength** to enamel in both self-curing and light-cured modes
- Smooth consistency and the **simplest clean up of excess**
- **Chemical adhesion to the tooth** structure, ensuring an excellent **marginal seal**
- **Quick and easy:** no need for etching and bonding of the tooth
- Direct delivery into the root canal with special elongation tip
- Virtually **no post-operative sensitivity**

Practical advantages

- Universal application in capsule delivery
- Consistency and simplicity
- Economic consideration: \$\$\$\$

Shade range

A2, Translucent, A03 and B01

Clinical applications

	Metal / PFM	Feldspathic / leucite ceramics*	Lithium Disilicate (e.g. GC Initial LiSi Press)	Zirconia / Alumina	Composite / Fibre-reinforced resin
Inlays / onlays	●	●	●	●	●
Crowns / bridges	●	●	●	●	●
Posts/ inlay-cores	●	N.A.	N.A.	●	●

* Feldspathic & leucite-reinforced ceramics

G-CEM ONE

Self-adhesive resin cement



Flexible: Optional use of the tooth primer provides optimal bond strength in retentive & non-retentive indications



Easy excess removal with the option of tack curing

Long-lasting aesthetic results

Clinical images courtesy of Dr Kazunori Otani, Japan

Simply the ONE

Choose G-CEM ONE, a dual-cure self-adhesive resin cement with high adhesive bond strength^{††} for daily procedures, which can also be used in challenging and non-retentive situations when applying the optional tooth primer[^].

Key clinical advantages

- **Reliable:** efficient chemical polymerization even under opaque or thick restorations^{#†}
- **Flexible:** increased tooth adhesion thanks to the Touch Cure technology of the Adhesive Enhancing Primer (AEP)
- **Aesthetic:** excellent wear resistance for long-lasting invisible margins[^]

Practical advantages

- **Universal:** reliable performance for any type of restoration, including non-retentive ones (when using the Adhesive Enhancing Primer)
- **Technique insensitive:** moisture tolerance, ideal viscosity, easy excess removal[^]
- **Simple:** standardized protocol with very easy handling
- Economic consideration: \$\$\$\$

Shade range

- A2, Translucent, AO3, White Opaque

Clinical applications

	Metal / PFM	Feldspathic / leucite ceramics*	Lithium Disilicate (e.g. GC Initial LiSi Press)	Zirconia / Alumina	Composite / Fibre-reinforced resin	Hybrid ceramics (e.g. CERASMART270)
Inlays / onlays	●	●	●	●	●	●
Crowns / bridges	●	●	●	●	●	●
Veneers	N.A.	●	●	●	●	●
Posts/ inlay-cores	●	N.A.	N.A.	●	●	N.A.

* Feldspathic & leucite-reinforced ceramics

[^] GC R&D, Data on file.

[#] Miyazaki S (2020). Excellent curing properties: chemical polymerization and comfortable clinical practice compatibility of G-Cem ONE. Clinical Advance; 7:167-169.

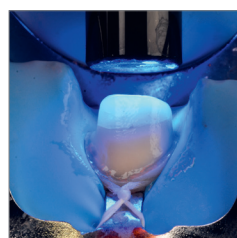
[†] Sato K, Arita A, Kumagai T (2019). Evaluation of Bonding Properties of Resin Cement in Self-cure Mode. J Dent Res (Spec Iss 98 A):1884 (<https://iadr.abstractarchives.com/abstract/19iags-3163131/evaluation-of-bonding-properties-of-resin-cement-in-self-cure-mode>)

G-CEM LinkForce

Dual-cure adhesive resin cement



Easy application of G-Premio BOND with or without prior etching



Light-curing of the thin adhesive (3µm) for optimal adhesion



One universal primer for stable adhesion to all substrates



Easy seating and perfect adaptation thanks to a very low film thickness

Clinical images courtesy of Dr Antonio Saiz-Pardo, Spain

Strength and aesthetics in one system for all indications, all substrates.

G-CEM LinkForce is the universal adhesive resin cement that is ideal to use whenever additional retention is needed and a must-have for all CAD/CAM ceramic and hybrid ceramic blocks such as CERASMART270.

Key clinical advantages

- Secure adhesion in all situations with **only one system, three base elements**:
 - **G-Premio BOND** bonds to ALL Preparations
 - **G-Multi PRIMER** ensures a stable adhesion to ALL Restorations
 - **G-CEM LinkForce** provides a strong link in ALL Indications
- Optimal light-curing feature for veneer indications
- **Efficient self-curing mode**, useful for luting more opaque or thick restorations

Practical advantages

- Optional use of G-Premio BOND Dual-Cure Activator for post luting
- The universal, strong and dependable solution to all your adhesive cementation challenges
- Choice of **four aesthetic shades** and their corresponding **try-in paste**
- Economic consideration: \$\$\$\$

Shade range

- A2, Translucent, Bleach, Opaque

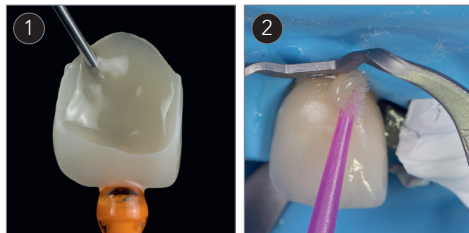
Clinical applications

	Metal / PFM	Feldspathic / leucite ceramics*	Lithium Disilicate (e.g. GC Initial LiSi Press)	Zirconia / Alumina	Composite / Fibre-reinforced resin	Hybrid ceramics (e.g. CERASMART270)
Inlays / onlays	●	●	●	●	●	●
Crowns / bridges	●	●	●	●	●	●
Veneers	N.A.	●	●	●	●	●
Posts/ inlay-cores	●	N.A.	N.A.	●	●	N.A.

* Feldspathic & leucite-reinforced ceramics

G-CEM Veneer

Light-cured adhesive resin cement



Easy dispensing

Thixotropic consistency: easy removal of excess



Light-cured composite: high aesthetics over time

Clinical images courtesy of Dr Javier Tapia Guadix, Spain (1) & Dr Olivier Etienne, France (2, 3 & 4)

A versatile resin cement for easy luting of restorations up to 2mm thick.

G-CEM Veneer: a light-cured resin cement for high aesthetic demand restorations featuring Full-coverage Silane Coating (FSC) technology.

Key clinical advantages

- **Thixotropic consistency** for easy placement of veneers and easy excess removal
- **High filler rate** of 69% (w/w) – for excellent wear resistance, bond and flexural strength[^]
- Its unique consistency allows it to have **optimally balanced flow** without the need for pre-heating the composite
- Allows ample working time to ensure proper placement of the restoration

Practical advantages

- Easy to use and universal system with G-Premio BOND and G-Multi PRIMER
- **Four aesthetic shades** to match every case with corresponding G-CEM Try-in paste
- Ergonomically designed syringe
- Economic consideration: \$\$\$\$

Shade range

- A2, Translucent, Bleach, Opaque

Clinical applications

	Glass-ceramics* (e.g. GC Initial LiSi Press)	Hybrid ceramics (e.g. CERASMART270)	Composite
Veneers	●	●	●
Inlays / onlays	● (< 2.0 mm thickness)	● (< 2.0 mm thickness)	● (< 2.0 mm thickness)

* Feldspathic, leucite-reinforced ceramics and lithium disilicate
[^] GC R&D, Data on file.

GC's Temporary cement

FREEGENOL TEMPORARY PACK

Zinc oxide cement



Key features

- All-purpose temporary solution
- Adjustable consistency and setting times
- Easy removal of excess
- Eugenol free avoids interaction with resin types of cement

GC Fuji TEMP LT

Glass Ionomer provisional luting cement in paste-pak cartridge



Key features

- Easy removal
- Easy seating thanks to its low film thickness (6µm)
- Rubbery consistency for easy removal of excess
- Radiopaque
- Ideal for cementation on implant abutments

GC's universal primer – G-Multi PRIMER










Universal solution

G-Multi PRIMER

One universal primer for **ALL***
your indirect restorations.

* glass ceramics, hybrid ceramics (e.g. CERASMART), zirconia, alumina, composite and metal restorations

GC Luting Cement Summary

	Conventional glass ionomer	Resin-modified glass ionomer		Self-adhesive resin		Adhesive resin	
	GC Fuji I 	GC Fuji PLUS 	FujiCEM 	G-CEM CAPSULE 	G-CEM ONE 	G-CEM LinkForce 	G-CEM Veneer 
Shades	Light yellow	Yellow	Yellow	A2, Translucent, AO3 & BO1	A2, Translucent, AO3 & White Opaque	A2, Translucent, Opaque & Bleach	A2, Translucent, Opaque & Bleach
Mixing time	10 sec	10 sec	20 sec **	10 sec	N.A.	N.A.	N.A.
Working time	2 min 15	2 min	2 min 15	2 min 30	2 min 40 2 min 10 (with AEP)	3 min	N.A.
Final finishing time (commencing time)	4 min 30	4 min 15	4 min 30	4 min	4 min	4 min	N.A.

** if hand mix

GC Luting navigation chart

Find the right cement to master your luting challenges!

		Glass Ionomers		Resins			
		Self-cure		Dual-cure		Light-cured	
		Conventional	Resin Modified	Self-adhesive		Adhesive	Adhesive
		GC Fuji I	GC Fuji PLUS & FujiCEM	G-CEM ONE & G-CEM CAPSULE	G-CEM ONE + AEP	G-CEM Link Force	G-CEM Veneer
Crowns & bridges	Metal	●					
	Zirconia		●				
	Lithium disilicate (e.g. Initial LiSi Press)			●	●	●	—
	Composite	—					
	Feldspathic & Leucite reinforced ceramics		—				
	Hybrid ceramics (e.g. CERASMART270)			—			
Inlays & onlays	Metal	●					—
	Zirconia		●				
	Lithium disilicate (e.g. Initial LiSi Press)			●	●	●	
	Composite	—					●*1
	Feldspathic & Leucite reinforced ceramic		inlays				
	Hybrid ceramics (e.g. CERASMART270)		—	—			
Veneers	Lithium Disilicate (e.g. Initial LiSi Press)						
	Composite	—	—	—	●	●	●*1
	Feldspathic & Leucite reinforced ceramics						
	Hybrid Ceramics (e.g. CERASMART270)						
Posts & inlay cores	Metal	●					
	Zirconia	—	●	●	●	●	—
	Fibre reinforced						

*1 For indirect restorations with thin thickness (≤ 2 mm) that enable the use of a purely light-cured mode.

GC Fuji I



GC Fuji I CAPSULE, Box of 50
GC Fuji 1 1-1 PKG (25g Liquid, 35g Powder)
GC Fuji 1 Liquid 25g (20mL)
GC Fuji 1 Powder 35g

GC Fuji PLUS



GC Fuji PLUS 1-1 Pkg (15g Powder, 8g Liquid, 6.5mL Conditioner)
GC Fuji PLUS 15g Powder
GC Fuji PLUS 8g Liquid
GC Fuji PLUS CAPSULE, Box of 50
GC Fuji PLUS Conditioner 6.5mL
GC Fuji PLUS EWT 15g Powder

GC FujiCEM



GC FujiCEM Refill Pack, 13.3g Cartridge
GC Paste Pak Dispenser

G-CEM CAPSULE



50 Capsules Assorted
20x A2, 20x Translucent, 5x A03, 5x BO1

Refill Capsules A2 (x50)
Refill Capsules AO3 (x50)
Refill Capsules Translucent (x50)
Refill Capsules BO1 (x50)
GC Capsule elongation tips (x50)

G-CEM ONE



Starter Kit A2:
1x syringe (4.6 g), 1x Adhesive Enhancing Primer (2 mL), accessories
Starter Kit Translucent:
1x syringe (4.6 g), 1x Adhesive Enhancing Primer (2 mL), accessories

Twin Refill A2, 2x syringes (4.6 g / 2.7 mL)
Twin Refill Translucent, 2x syringes (4.6 g / 2.7 mL)
Single Refill AO3, 1x syringe (4.6 g / 2.7 mL)
Single Refill White Opaque, 1x syringe (4.6 g / 2.7 mL)
G-CEM ONE Adhesive Enhancing Primer (4 mL) bottle refill

G-CEM LinkForce



System Kit:
1x syringe A2 (8.7 g / 5 mL), 1x syringe Translucent (8.7 g / 5 mL), G-Premio BOND (5 mL), G-Premio BOND DCA (3 mL), G-Multi PRIMER (5 mL), G-CEM Try-in Pastes (A2 & Translucent) (1.2 mL / 1.5 g), GC Etchant & accessories
Starter Kit A2:
1x syringe A2 (8.7 g / 5 mL), G-Premio BOND (5 mL), G-Multi PRIMER (5 mL) & accessories
Starter Kit Translucent (TR):
1x syringe Translucent (8.7 g / 5 mL), G-Premio BOND (5 mL), G-Multi PRIMER (5 mL) & accessories

Refill A2 - 1x (8.7 g / 5 mL)
Refill Translucent TR - 1x (8.7 g / 5 mL)
Refill Opaque - 1x (8.7 g / 5 mL)
Refill Bleach - 1x (8.7 g / 5 mL)
GC G-CEM Try-In Paste A2 (1.5 g / 1.2 mL)
GC G-CEM Try-In Paste Translucent (1.5 g / 1.2 mL)
GC G-CEM Try-In Paste Opaque (1.5 g / 1.2 mL)
GC G-CEM Try-In Paste Bleach (1.5 g / 1.2 mL)
G-Premio BOND (5 mL) bottle refill
G-Premio BOND DCA (3 mL)
GC Automix Tip Regular (x10)
GC Automix Tip for Endo (x10)

G-CEM Veneer



Kit:
1x syringe A2 (1.7 g / 1 mL), 1x syringe TR (1.7 g / 1 mL),
1x G-CEM Try-in Paste Refill A2 (1.5 g / 1.2mL),
1x G-CEM Try-in Paste Refill TR (1.5 g / 1.2mL),
G-Premio BOND (5 mL), G-Multi PRIMER (5 mL), accessories

Refill A2 (1.7 g / 1 mL)
Refill Translucent (1.7 g / 1 mL)
Refill Opaque (1.7 g / 1 mL)
Refill Bleach (1.7 g / 1 mL)
GC G-CEM Try-In Paste A2 (1.5 g / 1.2 mL)
GC G-CEM Try-In Paste Translucent (1.5 g / 1.2 mL)
GC G-CEM Try-In Paste Opaque (1.5 g / 1.2 mL)
GC G-CEM Try-In Paste Bleach (1.5 g / 1.2 mL)
G-Premio BOND (5 mL) bottle refill

Temporary Cement



FREEGENOL TEMPORARY PACK 1-1 Pack tubes
(55 g Base, 20 g Accelerator, 2.5 mL Cleaner)



GC Fuji TEMP LT 2x (13.3 g / 7.2 mL) Paste Pak cartridges 2x
(13.3 g / 7.2 mL)

Primer



G-Multi PRIMER (5 mL) Liquid



GC Australasia Dental Pty Ltd
1753 Botany Road Banksmeadow
NSW 2019 Australia

T: +61 2 9301 8200
E: info.australasia@gc.dental
www.gcaustralasia.com

The following products are trademarks of GC: GC Fuji I, GC Fuji PLUS, GC FujiCEM, G-CEM, G-CEM ONE, G-CEM LinkForce, G-CEM Veneer, FREEGENOL TEMPORARY PACK, GC Fuji TEMP LT, CERASMART270.
Please also refer to the instructions for use of the respective products.

Always read and follow the instructions for use. The products cited in this publication are for professional use only and are only available for sale to health professionals. In rare cases, the products cited in this publication may cause sensitivity in some people. If any such reactions are experienced, discontinue the use of the products and refer to a physician. For more information visit www.gcaustralasia.com or contact your GC specialist.

Product	Disclaimers
GC Fuji I	GC Fuji I is a glass ionomer luting cement for use only by a dental professional in the recommended indications. It is used for the cementation of metal-based inlays, onlays, crowns, bridges, and posts as well as high strength (zirconia-based) all-ceramic crowns and bridges. GC Fuji I is contraindicated for direct pulp capping. Avoid the use of this product in patients with known glass ionomer cement allergies. In case of contact with oral tissue or skin, remove immediately with a sponge or cotton soaked in alcohol. Flush with water. To avoid contact, a rubber dam and/or COCOA BUTTER can be used to isolate the operation field from the skin or oral tissue. In case of contact with eyes, flush immediately with water and seek medical attention.
GC Fuji PLUS	GC Fuji PLUS is a resin-modified glass ionomer luting cement designed for (1). cementation of metal-based inlays, onlays, crowns, and bridges; (2) cementation of resin inlays, onlays, crowns, and bridges; (3) cementation of all-ceramic inlays; (4) cementation of high strength (zirconia-based) all-ceramic crowns and bridges (5). Cementation of metal, ceramic, and fiber posts. It bonds chemically and mechanically to the tooth structure and all types of core materials. GC Fuji PLUS is contraindicated for direct pulp capping. Avoid the use of this product in patients with known allergies to glass ionomer cement, methacrylate monomer, or methacrylate polymer. In case of contact with oral tissue or skin, remove immediately with a sponge or cotton soaked in alcohol. Flush with water. In case of contact with eyes, flush immediately with water and seek medical attention. GC Fuji PLUS CONDITIONER contains 2% Ferric Chloride. It is not recommended to use GC Fuji PLUS CONDITIONER in combination with products containing Epinephrine as this may stain oral tissue.
GC FUJICEM	GC FujiCEM is a resin-modified glass ionomer luting cement for use only by a dental professional in the recommended indications. It is used for (1) cementation of metal-based inlays, onlays, crowns, and bridges; (2) cementation of resin inlays, onlays, crowns, and bridges; (3) cementation of all-ceramic inlays; (4) cementation of high strength (zirconia-based) all-ceramic crowns and bridges; (5) cementation of metal, ceramic and fiber posts. GC FujiCEM is contraindicated for direct pulp capping. Avoid the use of this product in patients with known allergies to glass ionomer cement, methacrylate monomer, or methacrylate polymer. In case of contact with oral tissue or skin, remove immediately with a sponge or cotton soaked in alcohol. Flush with water. To avoid contact, a rubber dam and/or COCOA BUTTER can be used to isolate the operation field from the skin or oral tissue. In case of contact with eyes, flush immediately with water and seek medical attention. In rare cases, metal may cause sensitivity to some people. If any such reactions are experienced, discontinue the use of Paste Pak Dispenser (nickel-plated aluminum) and refer to a physician.
G-CEM CAPSULE	G-CEM CAPSULE is a self-adhesive luting cement in capsule delivery for use only by a dental professional in the recommended indications. It is used for the cementation of all types of all-ceramic, resin, and metal-based inlays, onlays, crowns, and bridges (max. 2 abutments), cementation of metal, ceramic, fiber posts, and cast post and cores. G-CEM CAPSULE is contraindicated for direct pulp capping. Avoid the use of this product in patients with known allergies to glass ionomer cement, methacrylate monomer, or methacrylate polymer. In case of contact with oral tissue or skin, remove immediately with a sponge or cotton soaked in alcohol. Flush with water. To avoid contact, a rubber dam and/or COCOA BUTTER can be used to isolate the operation field from the skin or oral tissue. In case of contact with eyes, flush immediately with water and seek medical attention. If the tissue contacted by the material turns white or forms a blister, advise the patient to leave the affected area undisturbed, until the mark disappears, usually in 1-2 weeks.
G-CEM ONE/ G-CEM ONE ADHESIVE ENHANCING PRIMER	G-CEM ONE is a self-adhesive resin cement that is applied by dental professionals into a crown/bridge to fix and bond into the tooth. G-CEM ONE ADHESIVE ENHANCING PRIMER is a tooth primer for G-CEM ONE. G-CEM ONE is indicated for (1) cementation of all types of all-ceramic, resin, and metal-based inlays, onlays, crowns, and bridges; (2) cementation of metal, ceramic, fiber posts, and cast post and cores, (3) cementation of all-ceramic and composite veneers and (4) final cementation of crowns and bridges on implant abutments. G-CEM ONE and G-CEM ONE ADHESIVE ENHANCING PRIMER are contraindicated for direct pulp capping. Avoid the use of these products in patients with known allergies to methacrylate monomer, methacrylate polymer, or ethanol. In case of contact with oral tissue or skin, remove immediately with a sponge or cotton soaked in alcohol. Flush with water. To avoid contact, a rubber dam and/or COCOA BUTTER can be used to isolate the operation field from the skin or oral tissue. In case of contact with eyes, flush immediately with water and seek medical attention. This product is not indicated for filling or core build-up. Avoid inhalation or digestion of material. G-CEM ONE ADHESIVE ENHANCING PRIMER is volatile. Use in a well-ventilated place.
G-CEM LinkForce	G-CEM LinkForce is a resin adhesive cement used for luting indirect restorations. G-Multi PRIMER is a priming agent designed to treat adherent surfaces of glassceramics, hybrid ceramics, zirconia, alumina, composite, and metal restorations. G-CEM LinkForce is contraindicated for direct pulp capping. Avoid the use of G-CEM LinkForce in patients with known allergies to methacrylate monomer, methacrylate polymer, acetone, or ethanol. In case of contact with oral tissue or skin, remove immediately with a sponge or cotton soaked in alcohol. Flush with water. To avoid contact, a rubber dam and/or COCOA BUTTER can be used to isolate the operation field from the skin or oral tissue. In case of contact with eyes, flush immediately with water and seek medical attention. Avoid inhalation or digestion of material.
G-Multi PRIMER	G-Multi PRIMER is a priming agent designed to treat adherent surfaces of glassceramics, hybrid ceramics, zirconia, alumina, composite, and metal restorations. G-Multi PRIMER is contraindicated for direct pulp capping. Avoid the use of G-Multi PRIMER in patients with known allergies to methacrylate monomer, methacrylate polymer, or ethanol. Avoid inhalation or ingestion of G-Multi PRIMER. In case of G-Multi PRIMER contact with skin, remove immediately with a cotton pellet or a sponge. In case of G-Multi PRIMER contact with eyes, flush immediately with water and seek medical attention.
G-Premio BOND	G-Premio BOND is an adhesive used for direct bonding of light-cured composites/resin to tooth structure. G-Premio BOND is contraindicated for direct pulp capping. Avoid use of G-Premio BOND in patients with known allergies to methacrylate monomer, methacrylate polymer, or acetone. In case of contact with eyes, flush immediately with water and seek medical attention. Avoid inhalation or ingestion of material. In case of contact with oral tissue or skin, immediately remove with a sponge or cotton pellet. After the restorative treatment is finished, rinse thoroughly with water.
G-CEM Veneer	G-CEM Veneer is a light-cured adhesive resin cement for use only by a dental professional in the recommended indications. It is indicated for adhesive luting of ceramic and composite veneers, inlays, and onlays with a thickness of <2.0mm and translucency that enables the complete light-curing of the cement. G-CEM Veneer is contraindicated for direct pulp capping. Avoid the use of this product in patients with known allergies to methacrylate monomer or methacrylate polymer. In case of contact with oral tissue or skin, remove immediately with cotton or a sponge soaked in alcohol. Flush with water. To avoid contact, a rubber dam and/or COCOA BUTTER can be used to isolate the operation field from the skin or oral tissue. In case of contact with eyes, flush immediately with water and seek medical attention. In rare cases, the product may cause sensitivity in some people. If any such reactions are experienced, discontinue the use of the product and refer to a physician.
GC Fuji TEMP LT	GC Fuji TEMP LT is a glass ionomer provisional luting cement for use only by a dental professional in the recommended indications. It is indicated as a temporary (provisional) cement for all types of all-ceramic, resin, and metal-based crowns and bridges and Temporary (provisional) cement for all types of all-ceramic, resin, and metal-based crowns and bridges on implant abutments. Avoid the use of GC Fuji TEMP LT in patients with known allergies to glass ionomer cement. In case of contact with oral tissue or skin, remove immediately with a sponge or cotton soaked in alcohol. Flush with water. To avoid contact, a rubber dam and/or COCOA BUTTER can be used to isolate the operation field from the skin or oral tissue. Wear plastic or rubber gloves for protection. In case of contact with eyes, flush immediately with water and seek medical attention.
FREEGENOL	FREEGENOL is a eugenol-free temporary cement for use only by a dental professional in the recommended indications. It is indicated for the cementation of temporary crowns and bridges. Avoid the use of this product in patients with known allergies to rosin. In case of contact with eyes, flush immediately with water and seek medical attention.